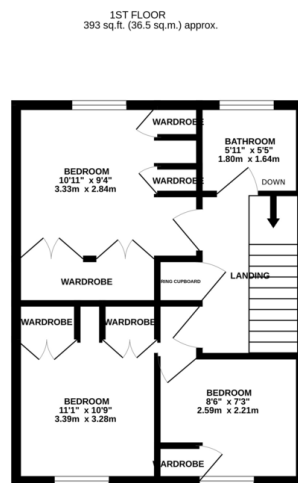
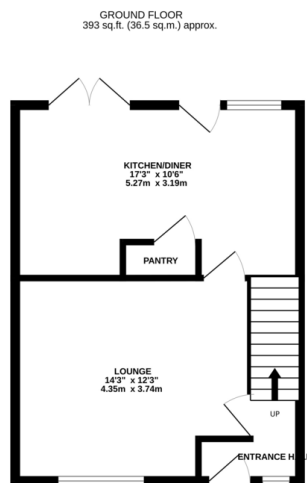




FOR SALE

3 Bed Semi-Detached House in Nene Court, Oadby, LE2 4JF
Offers Over £250,000

Well presented and well proportioned semi detached house for sale in Oadby. The property is located within walking distance of popular local schools, shops and bus routes. The accommodation comprises entrance hall, lounge, kitchen diner, three bedrooms, family bathroom, gardens to the front and rear and garage to the rear in a block.



TOTAL FLOOR AREA: 786 sq.ft. (73.0 sq.m.) approx.
Whilst every attempt has been made to ensure the accuracy of the description contained here, measurements of doors, windows, rooms and any other items are approximate and no responsibility is taken for any error, omission or misstatement. This plan is for illustrative purposes only and should be used as such by any prospective purchaser. The services, systems and appliances shown have not been tested and no guarantee as to their operability or efficiency can be given.
Made with Metropix ©2024

Score	Energy rating	Current	Potential
92+	A		
81-91	B		85 B
69-80	C	71 C	
55-68	D		
39-54	E		
21-38	F		
1-20	G		

- Semi Detached House
- Quiet Location
- Garage In A Block
- Three Bedrooms
- Well Presented Throughout
- Close To Schools
- Ideal First Time Buy
- Access To Amenities

Agents Note: Whilst every care has been taken to prepare these sales particulars, they are for guidance purposes only. All measurements are approximate are for general guidance purposes only and whilst every care has been taken to ensure their accuracy, they should not be relied upon and potential buyers are advised to recheck the measurements.

