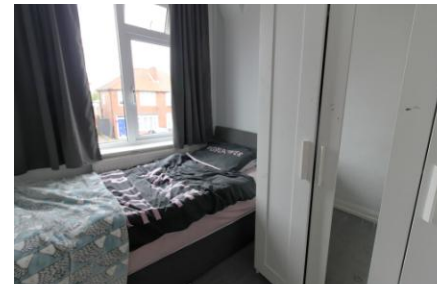




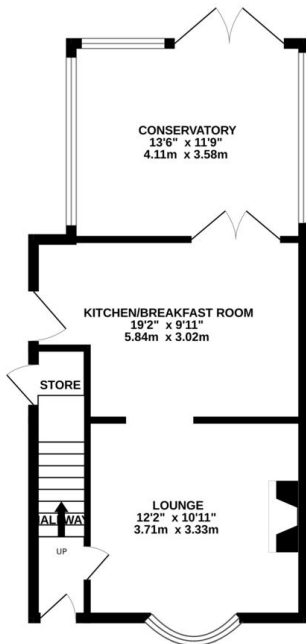
FOR SALE

3 Bed Semi-Detached House in Henley Crescent, Braunstone Town
£240,000

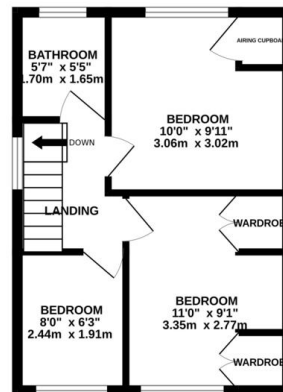
An ideal starter home for a young family or first time buyer alike. The property has excellent access to amenities including Fosse Shopping Park, the city centre and motorway connections. The accommodation comprises entrance hall, lounge, breakfast kitchen, conservatory, three bedrooms, bathroom, good size rear garden and off road parking.



GROUND FLOOR
455 sq.ft. (42.2 sq.m.) approx.

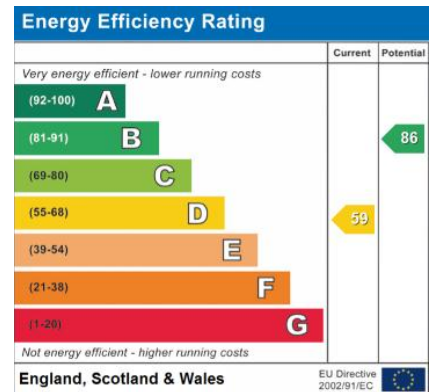


1ST FLOOR
316 sq.ft. (29.4 sq.m.) approx.



TOTAL FLOOR AREA: 771 sq.ft. (71.6 sq.m.) approx.

Whilst every attempt has been made to ensure the accuracy of the floorplans contained herein, measurements of doors, windows, rooms and any other items are approximate and no responsibility is taken for any error, omission or mis-statement. This plan is for illustrative purposes only and should be used as such by any prospective purchaser. The services, systems and appliances shown here are not been tested and no guarantee as to their operability or efficiency can be given.
Made with Metreage ©2024



- Semi Detached
- Three Bedrooms
- Off Road Parking
- Good Size Rear Garden
- Good Motorway Access
- Conservatory
- Shops Near By
- Ideal Starter Home

Agents Note: Whilst every care has been taken to prepare these sales particulars, they are for guidance purposes only. All measurements are approximate are for general guidance purposes only and whilst every care has been taken to ensure their accuracy, they should not be relied upon and potential buyers are advised to recheck the measurements.

