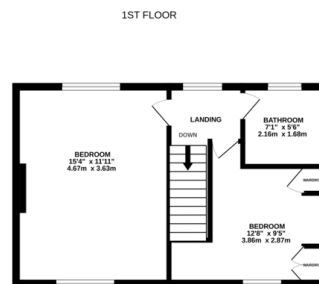
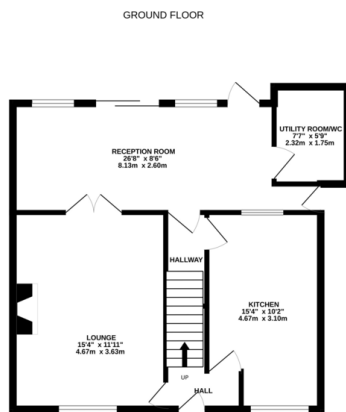




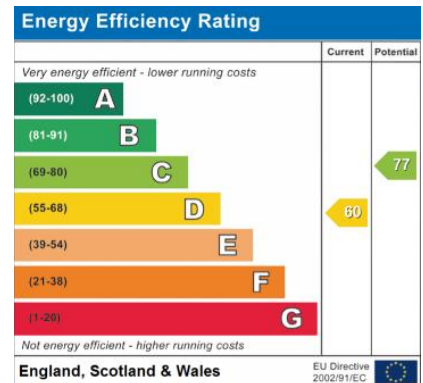
FOR SALE

2 Bed Detached House in Tetuan Road, Leicester LE3 9RS
£220,000

*** No Chain *** This property is what true potential looks like. A deceptively spacious detached family house which could be reconfigured to make it a 3 bed. The current layout comprises entrance hall, lounge, kitchen, rear extension, utility/downstairs w.c., inner rear hall, two double bedrooms, bathroom and gardens to the front and rear.



Whilst every attempt has been made to ensure the accuracy of the floorplan contained here, measurements of doors, windows, rooms and any other items are approximate and no responsibility is taken for any error, omission or mis-statement. This plan is for illustrative purposes only and should be used as such by any prospective purchaser. The services, systems and specifications shown have not been tested and no guarantee as to their operability or efficiency can be given.
Made with Metropix C2024



- No Chain
- Huge Potential
- Detached House
- Work Required
- Two Double Bedrooms
- Popular Location
- Big Garden
- Rear Extension

Agents Note: Whilst every care has been taken to prepare these sales particulars, they are for guidance purposes only. All measurements are approximate and for general guidance purposes only and whilst every care has been taken to ensure their accuracy, they should not be relied upon and potential buyers are advised to recheck the measurements.

