



FOR SALE

2 Bed Mid Terraced House in Lansdowne Grove, South Wigston LE18 4LY
£210,000

Located on Lansdowne Grove in the ever popular South Wigston sits this well presented two bedroom mid town house being offered chain free. The accommodation comprises main entrance hall, lounge, refitted kitchen and diner, landing to two bedrooms, refurbished shower room, larger than average rear landscaped garden, ample off road parking. The property boasts open rear field views and a range of close amenities making an ideal first time purchase or investment opportunity. Call Phillips George to view.

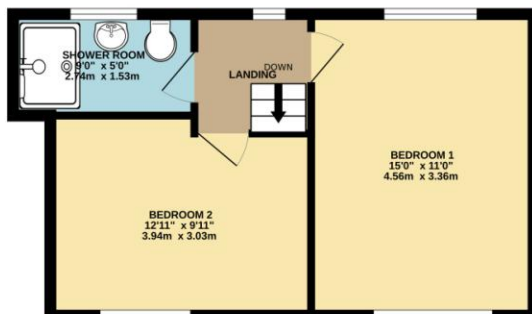


GROUND FLOOR
358 sq.ft. (33.3 sq.m.) approx.

EPC To Follow



1ST FLOOR
368 sq.ft. (34.2 sq.m.) approx.



- No Upward Chain
- Mid Town House
- Two Bedrooms
- Refitted Kitchen
- Refurbished Shower Room
- Large Rear Garden
- Open Rear Views
- Off Road Parking

Agents Note: Whilst every care has been taken to prepare these sales particulars, they are for guidance purposes only. All measurements are approximate and are for general guidance purposes only and whilst every care has been taken to ensure their accuracy, they should not be relied upon and potential buyers are advised to recheck the measurements.

