



FOR SALE

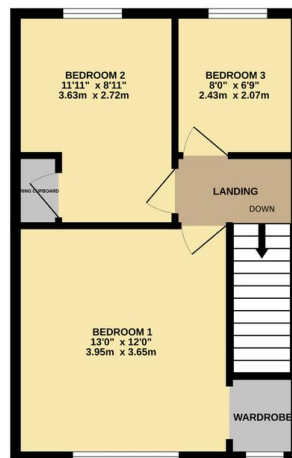
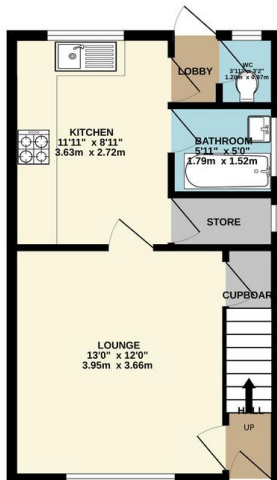
3 Bed Mid Town House in Pullman Road, Wigston LE18 2DA
£210,000

Situated in the convenient location Off Station Road in Wigston this well presented three bedroom mid town house is offered with no upward chain and benefits from upgraded electric's and gas central heating. The accommodation comprises of main entrance hall, lounge, kitchen ground floor bathroom, separate ground floor WC, landing to three bedrooms, landscaped large rear garden, on street parking. The property would make an ideal investment or first time buy opportunity. Call Phillips George to view.



GROUND FLOOR
369 sq.ft. (34.3 sq.m.) approx.

1ST FLOOR
391 sq.ft. (36.3 sq.m.) approx.



TOTAL FLOOR AREA: 760 sq.ft. (70.6 sq.m.) approx.
Whilst every attempt has been made to ensure the accuracy of the description contained herein, measurements of doors, windows, rooms and any other items are approximate and no responsibility is taken for any error, omission or misstatement. This plan is for illustrative purposes only and should be used as such by any prospective purchaser. The services, systems and appliances shown have not been tested and no guarantee as to their operability or efficiency can be given.
Made with Metigo ©2024

EPC TO FOLLOW

- Mid Town House
- Three Bedrooms
- No Upward Chain
- Convenient Location
- Neat Presentation
- Kitchen
- Ground Floor Bathroom & W.C
- On Street Parking Only

Agents Note: Whilst every care has been taken to prepare these sales particulars, they are for guidance purposes only. All measurements are approximate are for general guidance purposes only and whilst every care has been taken to ensure their accuracy, they should not be relied upon and potential buyers are advised to recheck the measurements.

