



FOR SALE

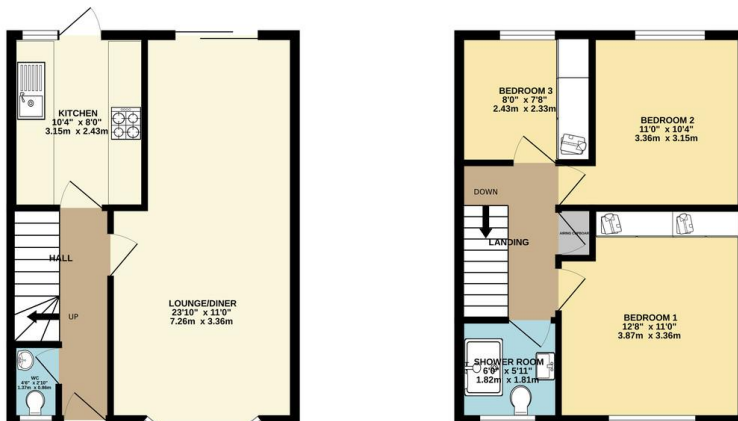
3 Bed Semi-Detached House in Shire Close, Leicester LE3 6SN
£250,000

Situated in a highly popular location and presented to a high standard throughout this three bedroom semi detached is nestled on a quiet cul de sac. The accommodation comprises main entrance hall, lounge and diner, kitchen, landing to three bedrooms, refurbished shower room, landscaped gardens, detached rear garage. Call Phillips George to view.



GROUND FLOOR
395 sq.ft. (36.7 sq.m.) approx.

1ST FLOOR
390 sq.ft. (36.3 sq.m.) approx.



TOTAL FLOOR AREA - 785 sq.ft. (73.0 sq.m.) approx.
Whilst every attempt has been made to ensure the accuracy of the floorplan contained here, measurements of doors, windows, walls and any other items are approximate and no responsibility is taken for any error, omission or mis-statement. This plan is for illustrative purposes only and should be used as such by any prospective purchaser. The services, systems and appliances shown have not been tested and no guarantee as to their operability or efficiency can be given.
Made with MyHomeplan 02026

EPC To Follow..

- Semi Detached
- Three Bedrooms
- Highly Popular Central Location
- High Presentation Throughout
- Ground Floor W/C
- Refurbished Shower Room
- Landscaped Gardens
- Cul De Sac

Agents Note: Whilst every care has been taken to prepare these sales particulars, they are for guidance purposes only. All measurements are approximate and for general guidance purposes only and whilst every care has been taken to ensure their accuracy, they should not be relied upon and potential buyers are advised to recheck the measurements.

