



TO LET

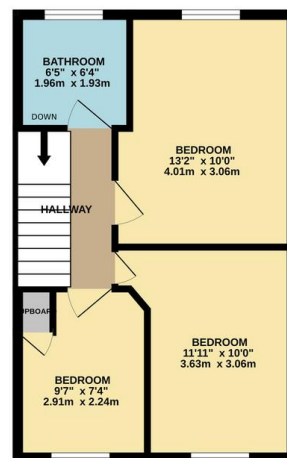
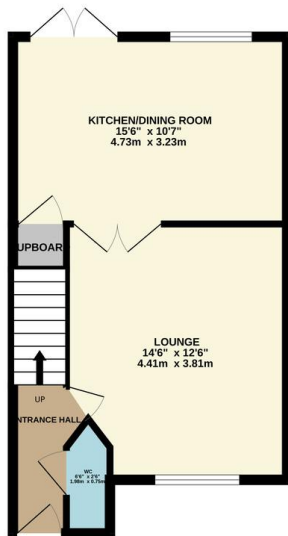
3 Bed Semi-Detached House in Deacon Close, Market Harborough LE16 7UT
£1,300 pcm

Three bedroom town house set in a quiet cul de sac in Market Harborough now available to let. In excellent condition throughout and decorated to a contemporary standard, the property comprises entrance hall, downstairs WC, lounge, kitchen diner and garden room downstairs, together with three bedrooms and bathroom upstairs. The property also benefits from off road parking for three cars, garage with light and heating and a pleasant two tiered low maintenance yard to the rear.



GROUND FLOOR
406 sq.ft. (37.7 sq.m.) approx.

1ST FLOOR
389 sq.ft. (36.2 sq.m.) approx.



TOTAL FLOOR AREA: 795 sq.ft. (73.9 sq.m.) approx.
While every attempt has been made to ensure the accuracy of the floorplan contained here, measurements of doors, windows, rooms and any other items are approximate and no responsibility is taken for any error, omission or misstatement. This plan is for illustrative purposes only and should be used as such by any prospective purchaser. The services, systems and appliances shown have not been tested and no guarantee is given for their operability or efficiency can be given.
Made with Metropix ©2024

EPC graph TBC

- Three Bedrooms
- Semi Detached Home
- Modern Kitchen Diner
- Downstairs WC
- Garden Room
- Offered Unfurnished
- Excellent Condition Throughout
- Garage With Lighting & Heating

Agents Note: Whilst every care has been taken to prepare these sales particulars, they are for guidance purposes only. All measurements are approximate and for general guidance purposes only and whilst every care has been taken to ensure their accuracy, they should not be relied upon and potential buyers are advised to recheck the measurements.

