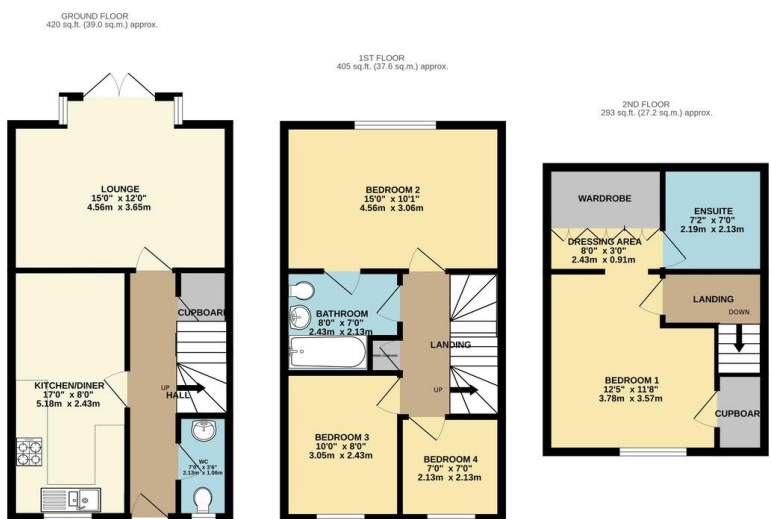




FOR SALE

4 Bed Mid Terraced House in Carty Road, Leicester LE5 1QS
£300,000

** Offered with no upward chain ** Nestled on a quiet pathway with open views to the front sits this three storey four bedroom modern town house located in the highly popular estate of Hamilton, LE5. The accommodation comprises entrance hall, kitchen and diner, lounge, ground floor W.C, first landing to three bedrooms, family bathroom, further landing to master bedroom with walk in wardrobe and en-suite shower room, front and rear landscaped gardens, detached garage. Call Phillips George to view.



TOTAL FLOOR AREA: 1118 sq. ft. (103.8 sq. m.) approx.

Whilst every attempt has been made to ensure the accuracy of the floorplan contained here, measurements of doors, windows, rooms and any other items are approximate and no responsibility is taken for any error, omission or mis-statement. This plan is for illustrative purposes only and should be used as such by any prospective purchaser. The services, systems and appliances shown have not been tested and no guarantee as to their operability or efficiency can be given.
Made with Metropix ©2024

Energy Efficiency Rating		Current	Potential
Very energy efficient - lower running costs			
(92-100)	A		
(81-91)	B		88
(69-80)	C	77	
(55-68)	D		
(39-54)	E		
(21-38)	F		
(1-20)	G		
Not energy efficient - higher running costs			
England, Scotland & Wales		EU Directive 2002/91/EC	

- Modern Town House
- Three Storey
- Four Bedrooms
- Ensuite Shower Room
- Highly Popular Location
- Neatly Presented
- Garage
- No Upward Chain

Agents Note: Whilst every care has been taken to prepare these sales particulars, they are for guidance purposes only. All measurements are approximate and for general guidance purposes only and whilst every care has been taken to ensure their accuracy, they should not be relied upon and potential buyers are advised to recheck the measurements.

