



Baxendale Street, E2

£1,050,000

Dexters



Baxendale Street, London, E2

OFFERS IN EXCESS OF: A three bedroom end of terrace townhouse which has been remodelled throughout, located in Jesus Green. The property is sold chain free, has a south facing garden and original features throughout.

The ground floor has a separate reception room and an open dining room with reclaimed heron bone wooden flooring throughout. The kitchen/breakfast area opens onto the private walled south facing garden.

The two double bedrooms and a family bathroom are situated on the first floor with the third bedroom currently used as a study. The property has storage throughout.

Located on Baxendale Street the property is located within the Jesus Hospital Estate and round the corner from Columbia Road.

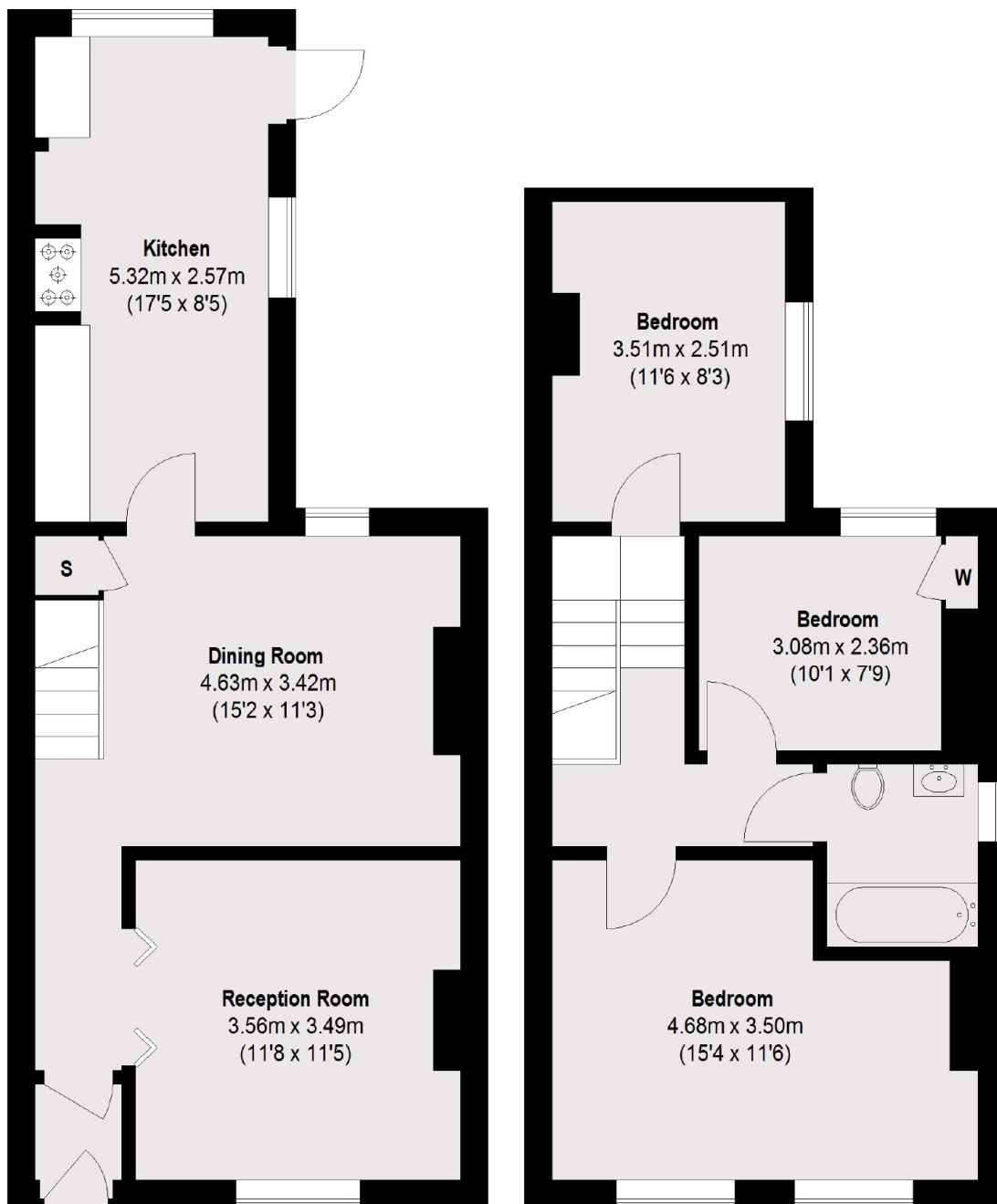
Situated within half a mile from Hoxton Overground and Haggerston Park which has Hackney City Farm. Columbia Road Flower Market is located on your doorstep with local cafés and restaurants.

Features

- Three Bedrooms
- End Of Terrace Townhouse
- Freehold
- Conservation Area
- Chain Free
- South Facing Garden



Baxendale Street,
London, E2



Ground Floor

First Floor

Total area (approx.): 89.1 sq. m (959 sq. ft)