



Plumbers Row, E1

£400,000

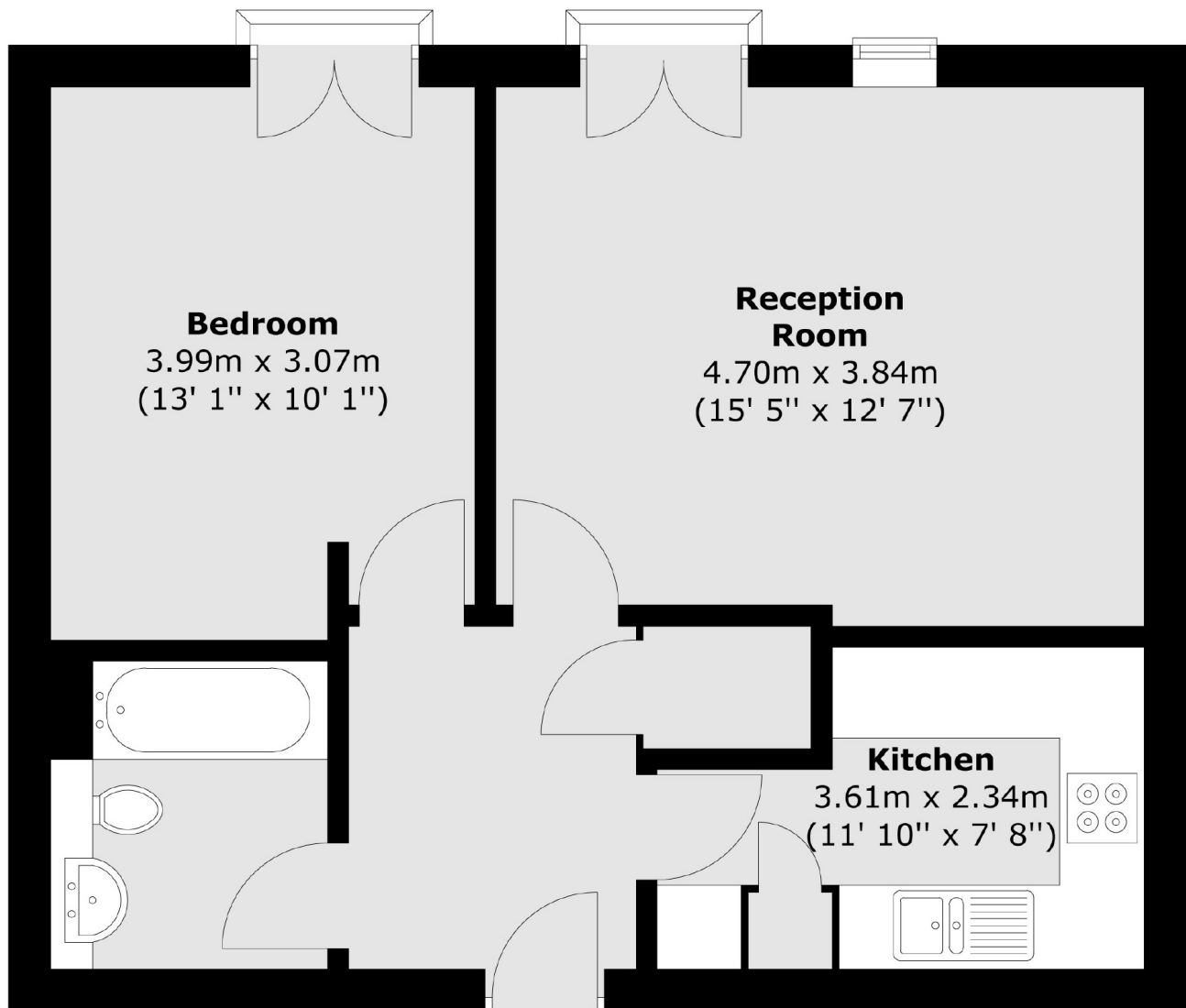
A spacious one bedroom apartment in a sought after location presented with modern interiors. This one bedroom apartment has a semi open plan living room with space to dine and a fully integrated kitchen. Each room, including the large double bedroom with in-built storage, has access to a Juliet balcony and the floor to ceiling windows allow for a generous amount of natural light.

The property is situated in a sought after location a short distance from a range of shops, restaurants, bars and other amenities that can be found in Aldgate, Spitalfields Market, the City and Shoreditch. Multiple transport links are close by, stations include Aldgate, Whitechapel and Liverpool Street stations allowing access to all corners of the City and beyond.

Features

- One Bedroom Apartment
- Fully Integrated Kitchen
- Juliet Balconies
- Sought After Location
- Great Transport Links
- Modern Interiors

Plumbers Row,
London, E1



Total area (approx.) : 51.4 sq. m (553 sq. ft)
Total balcony area (approx.) : 0.4 sq. m (4 sq. ft)

Dexters

Shoreditch
44 Great Eastern Street
London
EC2A 3EP
Sales
0207 483 6371

Energy Rating: C. We aim to make our particulars both accurate and reliable. However they are not guaranteed; nor do they form part of an offer or contract. If you require clarification on any points then please contact us, especially if you're traveling some distance to view. Please note that appliances and heating systems have not been tested and therefore no warranties can be given as to their good working order.

 **RICS** | Regulated
Estate Agent
and Letting Agent

dexters.co.uk