



Stepney Way, E1

£340,000

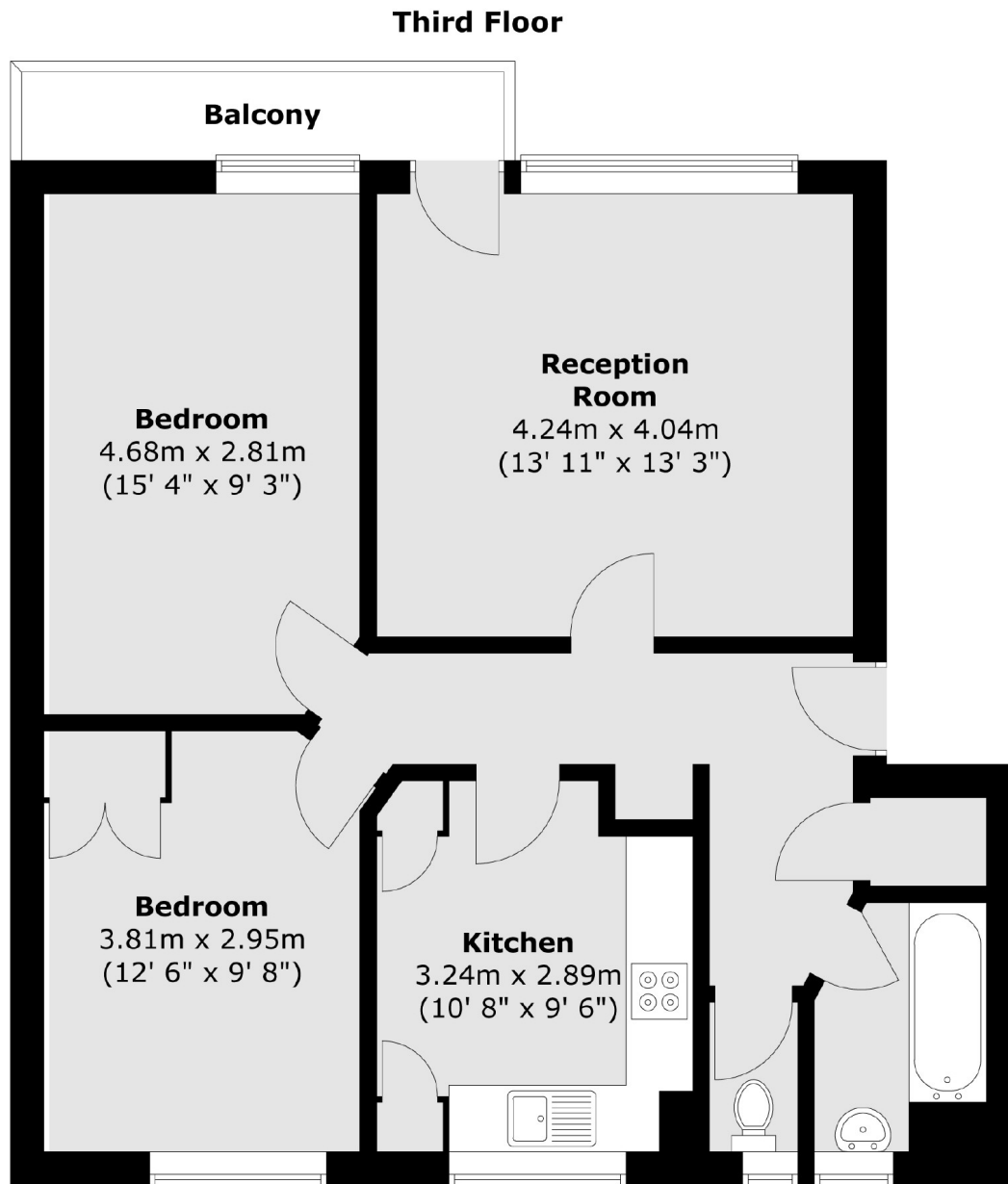
This flat comprises of two good sized double bedrooms a generous reception room, kitchen, bathroom with separate WC and private balcony. This is a fantastic opportunity to add value or to leave your own mark on your new home.

Armsby House is well located just under half a mile from both Whitechapel and Stepney Green Underground stations and Shadwell DLR station just over half a mile away, offering excellent links into the city and The West End.

Features

- Development opportunity
- Two Double Bedrooms
- Private Balcony
- Separate Kitchen
- Double Glazing Windows

Stepney Way, London, E1



Total area (approx.) : 67.3 sq. m (724 sq. ft)
Total balcony area (approx.) : 3.4 sq. m (36 sq. ft)