



Strype Street, E1

£600,000

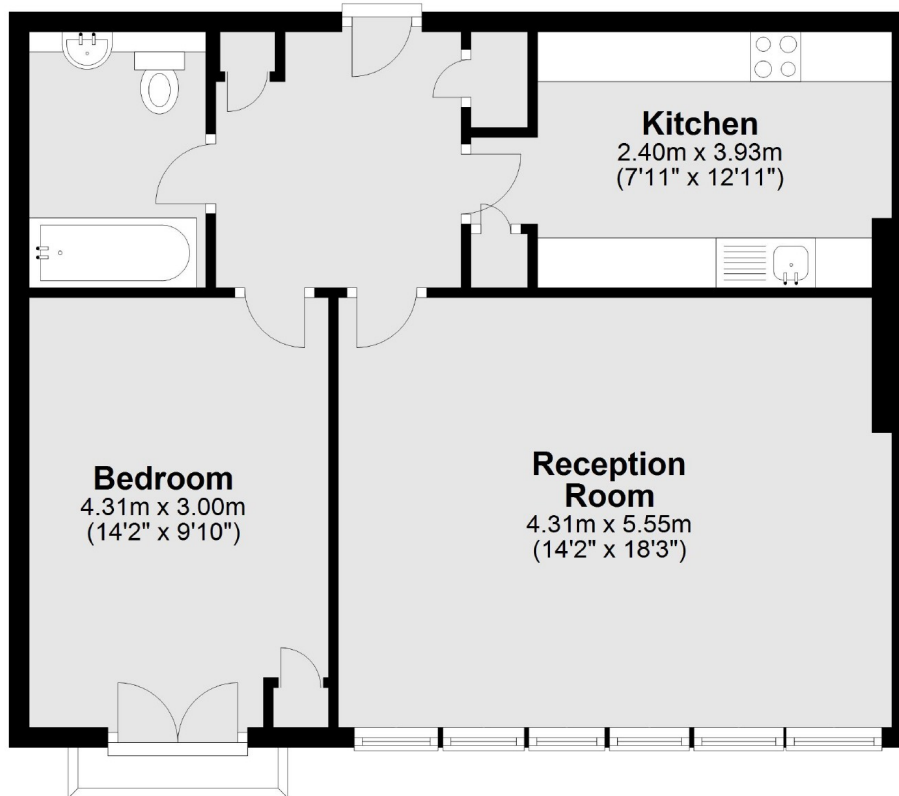
An amazing warehouse style one double bedroom apartment in the centre of Liverpool Street. This property has an open plan living and kitchen area with ample space and offers lift access.

Located on Strype Street which is minutes away from Spitalfields market and Bishopsgate, this property is a short walk from a wide selection of shops, cafés, restaurants and bars.

Features

- One Double Bedroom
- Central Location
- Furnished
- Modern Warehouse Style
- Outside Space
- Lift Access

Strype Street, London, E1



Total area: approx. 60.4 sq. metres (650.0 sq. feet)