



Durant Street, E2

£575,000

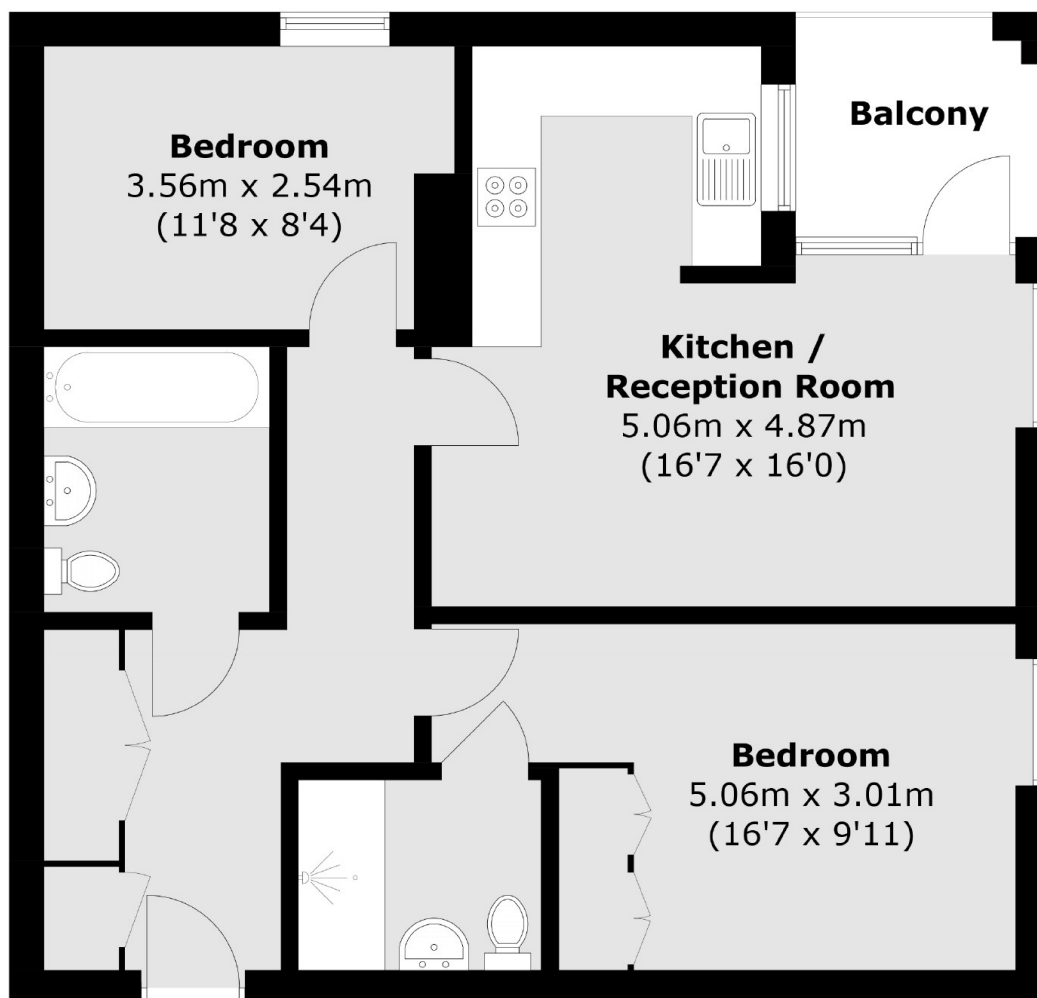
A two double bedroom, two bathroom apartments in a modern development close to Columbia Road. The property has ample storage, floor to ceiling windows, a private balcony and access to the communal rooftop terrace with incredible City views.

Tria Apartments is well located opposite Warner Green and around the corner from Jesus Green and Columbia Road, while Bethnal Green Station is only a half mile away for the Central Line.

Features

- Two Double Bedrooms
- Two Bathrooms
- Balcony
- Communal Roof Terrace
- No Onward Chain
- Local Markets

Durant Street, London, E2



Third Floor

Total area (approx.): 63.6 sq. m (684.6 sq. ft)
Balcony(approx) : 4.0 sq. m (43.0 sq. ft)