

Rope Walk Gardens, E1

£400,000

A two double bedroom apartment located on the second floor of a purpose built block. This property has an open plan living and kitchen area, high ceilings, sash windows and is sold chain free.

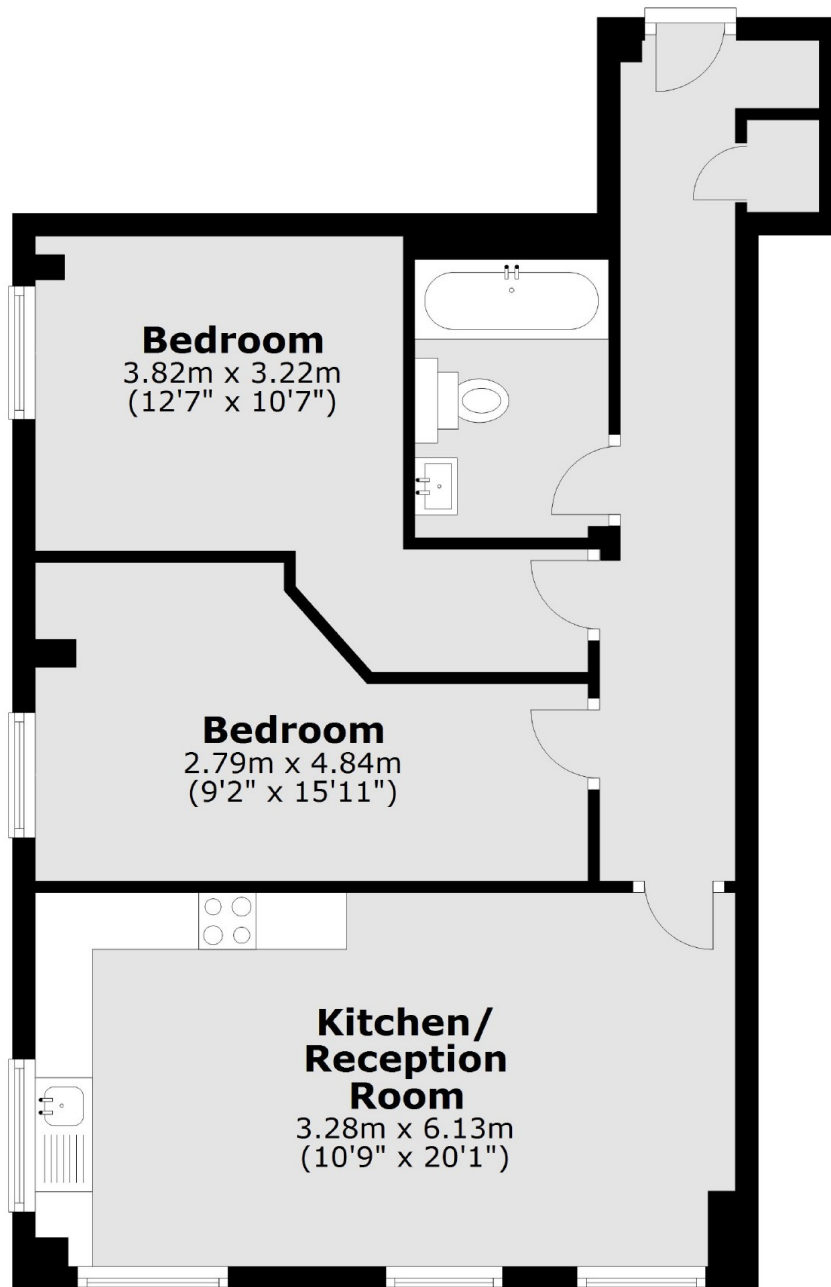
Located off Commercial Road, this property is half a mile from the Elizabeth Line at Whitechapel Station. It is also less than half a mile from Aldgate East Station, Shadwell DLR and London Overground Station. Brick Lane is located a quarter mile away which has restaurants, cocktail bars, and leads to Shoreditch.

Features

- OIEO
- Two Double Bedrooms
- Sash Windows
- Open Plan
- Lift Access
- Chain Free
- Elizabeth Line

Rope Walk Gardens, London, E1

Second Floor



Total area: approx. 58.2 sq. metres (626.7 sq. feet)