



Jubilee Street, E1

£1,500,000

Dexters



Jubilee Street, London, E1

Two conjoined late Georgian, grade II listed artisan cottages on Jubilee Street. The property has four bedrooms, two bathrooms, double height kitchen/dining room, mezzanine reception room and a private garden.

On the lower ground floor the house has a double bedroom, bathroom, two vaults and three other additional rooms for storage. This space could be better laid out potentially making two double bedrooms with en-suite bathrooms.

On the ground floor the open plan kitchen reception has a double height space and a mezzanine. A 25ft window leads onto the private 40 ft garden. There are a further two bedrooms and entrance hall.

The first floor has a master bedroom, en suite bathroom and a mezzanine reception room overlooking the kitchen/dining room.

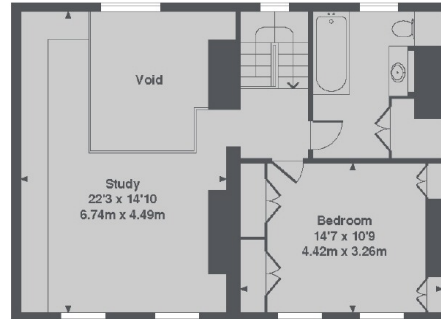
Jubilee Street is just over a quarter of a mile from Stepney Green Park and Whitechapel Underground station which is part of the Crossrail Project.

Features

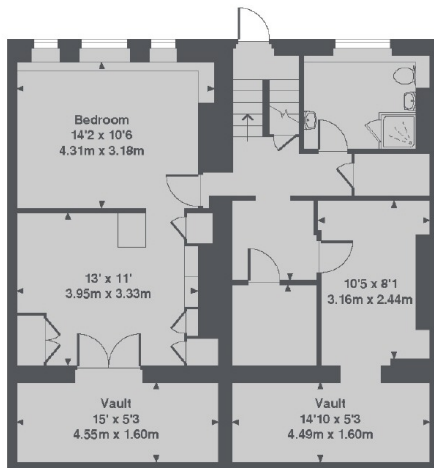
- Freehold House
- Private Garden
- Georgian
- Grade II Listed
- Four Bedrooms
- Mezzanine Reception Room



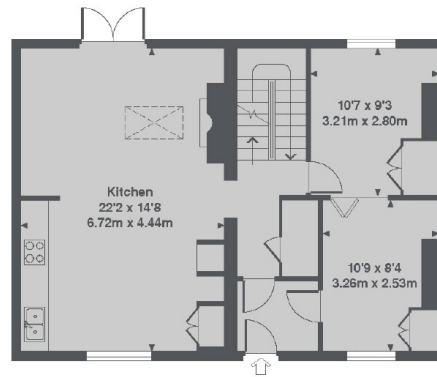
Jubilee Street, London, E1



2nd Floor



Ground Floor



Ground Floor

JUBILEE STREET, E1

Total Approx. Floor area 2047 Sq. Ft. (190.2 Sq. M.)

Dexters

Shoreditch
44 Great Eastern Street,
Bishopsgate, London, EC2A
Sales
0207 483 6371

Energy Rating: N/A. We aim to make our particulars both accurate and reliable. However they are not guaranteed; nor do they form part of an offer or contract. If you require clarification on any points then please contact us, especially if you're traveling some distance to view. Please note that appliances and heating systems have not been tested and therefore no warranties can be given as to their good working order.

 **RICS** | Regulated
Estate Agent
and Letting Agent

dexters.co.uk