



## Great Eastern Street, EC2A

£3,600 Per calendar month

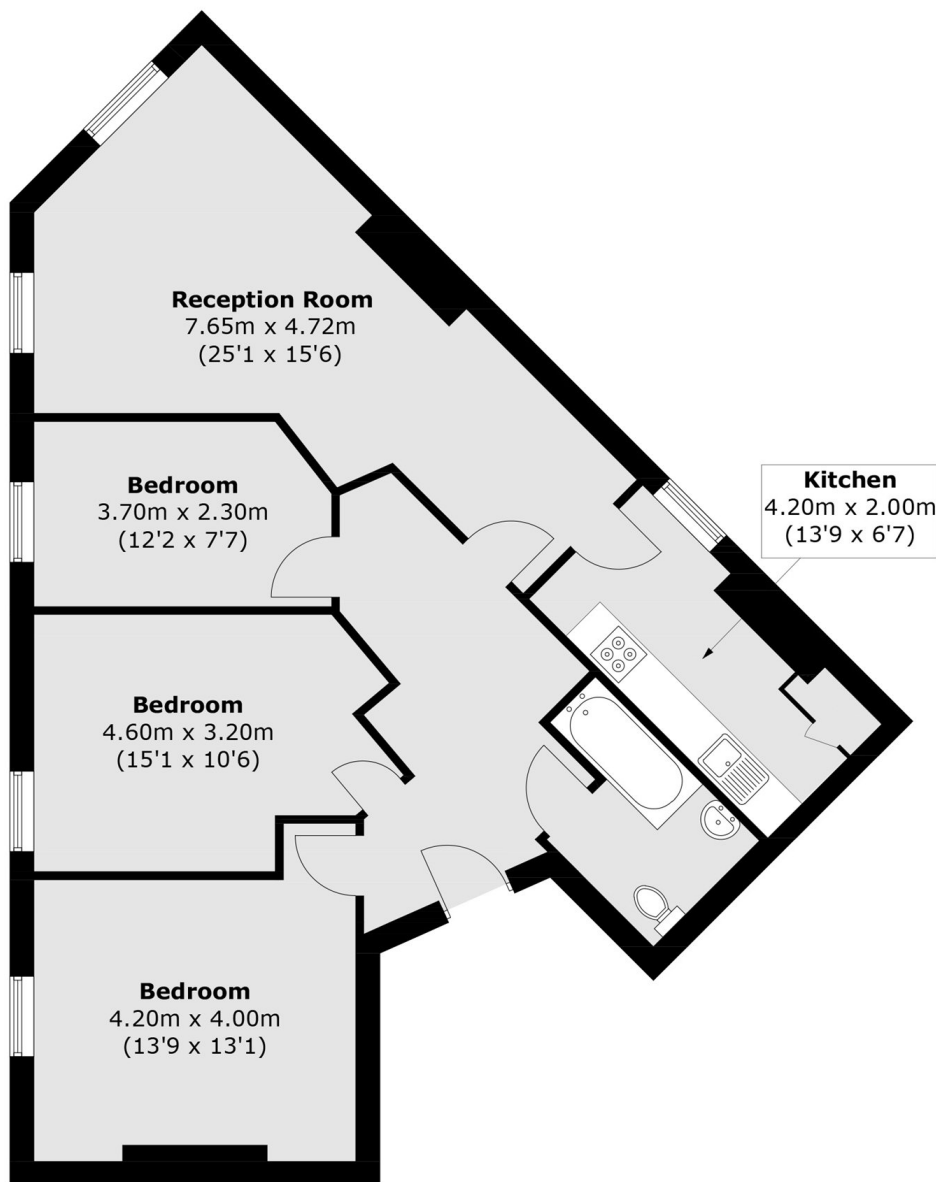
A three double bedroom property based on Great Eastern Street. The flat has three double bedrooms, a great size living area along with a separate kitchen and bathroom. The property is available unfurnished.

The property is located in the heart of Shoreditch with a fantastic choice of restaurants, cafes and bars available. The apartment is a short distance to Liverpool Street and Shoreditch High Street stations.

### Features

- Top Floor
- Separate Kitchen
- Unfurnished
- Three Double Rooms
- Great Location
- Great Transport Links

Great Eastern Street,  
London, EC2A



**Third Floor**

Total area (approx.): 84.8 sq. m (912.8 sq. ft)