



## Bartholomew Square, EC1V

£1,290,000

This unique penthouse apartment located on the fourth floor is split over two levels and offers three double bedrooms, one with a large, private, terrace and en-suite shower room and the primary has bespoke built-in wardrobes and access to a south-facing balcony.

This property is just 0.3 miles from Barbican Arts Centre with its major art gallery, concert hall, theatres, and cinemas. Local transport links include Old Street, Barbican, Moorgate, Liverpool Street and Farringdon offering access to Northern, Metropolitan, Hammersmith & City, Circle, Central, Thameslink Services, Greater Anglia Services and the Elizabeth Lines.

### Features

Three Double Bedrooms  
Three Private Terraces  
Two Bathrooms plus W/C  
Bi-folding Doors  
Fourth Flexible Bedroom/  
Study  
Penthouse



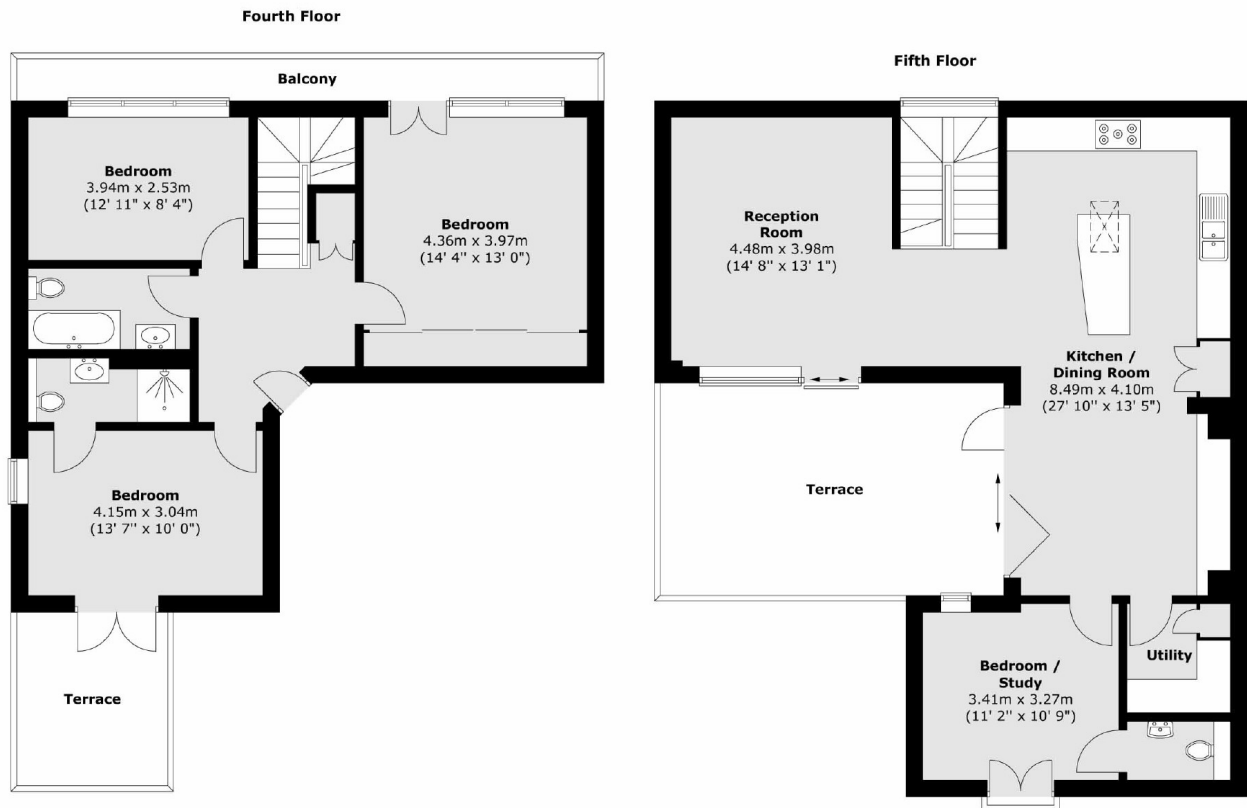
## Bartholomew Square, EC1V

The upper level consists of a large and bright open planned, L-shaped, kitchen/dining/living space, with an exposed steel vaulted ceiling and a floor-to-ceiling sliding glass door to access the rooftop terrace. To the left is a fully integrated modern kitchen with a breakfast bar and island storage unit. To the rear of the dining room is an additional room that has use as a fourth bedroom, home office, and second lounge with a WC connected to it.





# Bartholomew Square, London, EC1V



Total area (approx.) : 141.2 sq. m (1520 sq. ft)  
Total balcony area (approx.) : 8 sq. m (86 sq. ft)  
Total terrace area (approx.) : 36.6 sq. m (394 sq. ft)