



Durant Street, E2

£2,300 Per week

A 550sq ft one double bedroom apartment within a secure entry development. This third floor property includes a private South facing balcony, open plan reception, large double bedroom and secure fob entry system. The development also has a communal roof terrace, the property will be furnished

Tria Apartments is a modern development located at the bottom of Durant Street and the popular Jesus Green triangle. Columbia Road flower market is renowned on a Sunday and Bethnal Green underground is near by.

Features

550sq ft
South Facing Balcony
Third Floor
Bright
Secure Entry System
Superb Location

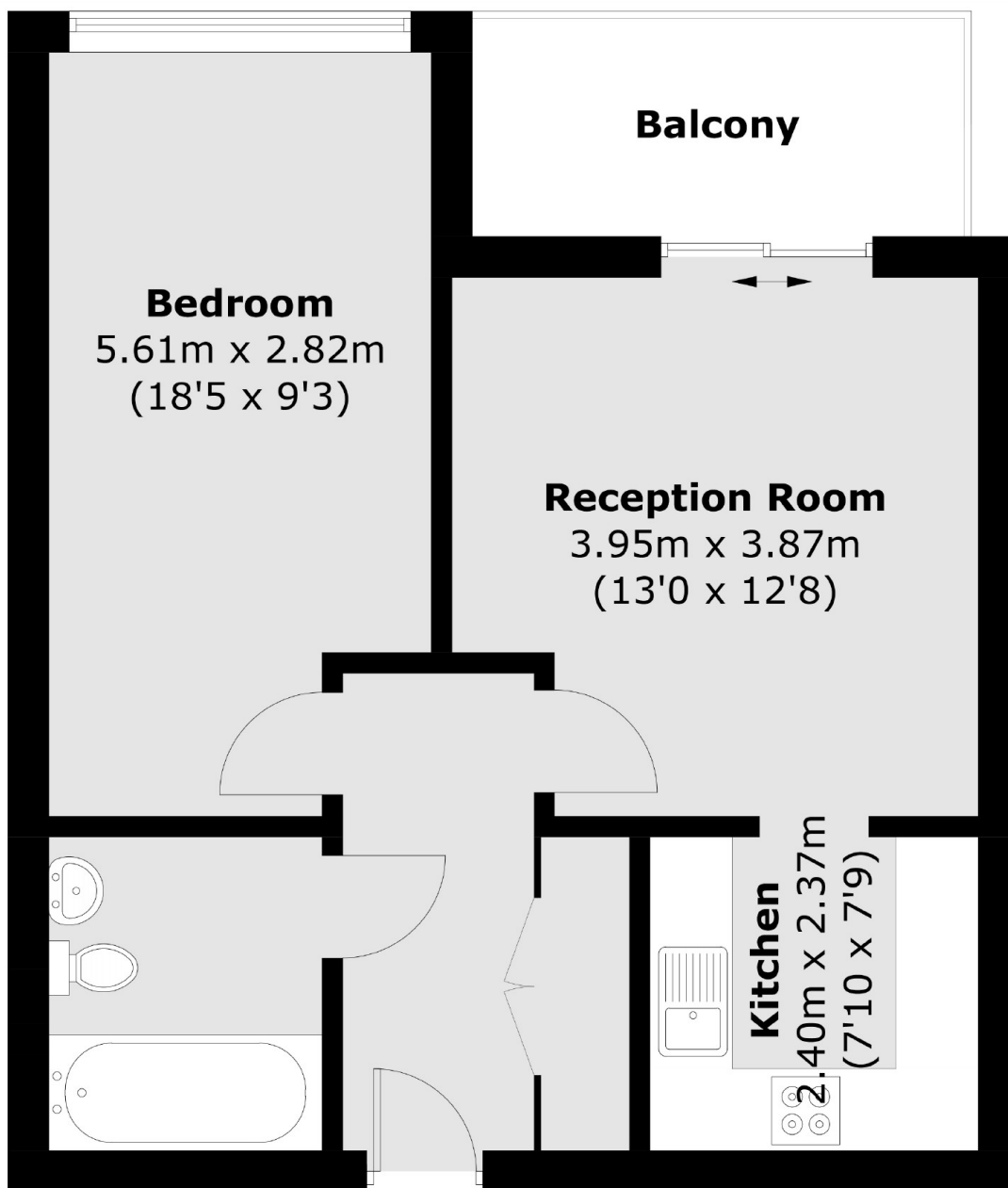


Durant Street, E2

A 550sq ft one double bedroom apartment within a secure entry development. This third floor property includes a private South facing balcony, open plan reception, large double bedroom and secure fob entry system. The development also has a communal roof terrace, the property will be furnished



Durant Street, London, E2



Third Floor

Total area (approx.): 48.5 sq. m (522.0 sq. ft)
Balcony Area (approx.): 5.8 sq. m (62.4 sq. ft)

Dexters

Shoreditch
44 Great Eastern Street
London
EC2A 3EP
Lettings
0207 483 6372

Energy Rating: B. We aim to make our particulars both accurate and reliable. However they are not guaranteed; nor do they form part of an offer or contract. If you require clarification on any points then please contact us, especially if you're traveling some distance to view. Please note that appliances and heating systems have not been tested and therefore no warranties can be given as to their good working order.

 **RICS** | Regulated
Estate Agent
and Letting Agent

[dexters.co.uk](https://www.dexters.co.uk)