



## Christian Street, E1

### £300,000

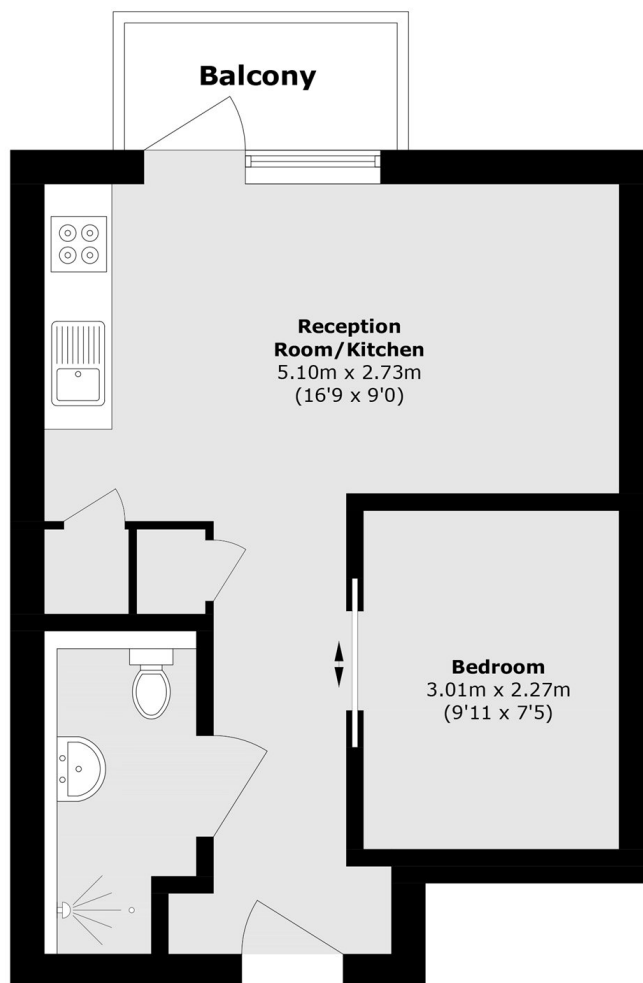
A bright studio apartment situated on the second floor. The property features a modern open-plan living and kitchen area with wooden flooring, leading onto a private balcony with courtyard views. There is a semi-separate bedroom area with built-in storage, floor-to-ceiling windows throughout, and a well-appointed family bathroom. Residents also benefit from access to an on-site gym and a day porter.

The property is conveniently located a short distance from Aldgate (Circle and Metropolitan lines) and Aldgate East (District and Hammersmith & City lines), with Shadwell nearby for DLR connections. The area also offers a wide selection of bars, restaurants, and cafés.

### Features

- Studio apartment
- Chain Free
- Secure Development
- On-Site Concierge
- Private Balcony
- Residents Gym

# Christian Street, London, E1



Total area (approx.): 33.0 sq. m (355.2 sq. ft)

Balcony area (approx.): 2.7 sq. m (29.0 sq. ft)