



Leman Street, E1
£975,000

Dexters



Leman Street, E1

A well-presented two bedroom apartment located in Sterling Mansions. The apartment features a spacious open plan living and dining area with floor-to-ceiling windows, and a modern kitchen fitted with premium integrated appliances. Both bedrooms are generously sized, with the master bedroom including an en-suite bathroom, and have access to the large private patio. Residents benefit from a 24-hour concierge service, secure entry, and exclusive access to a private courtyard and residents' lounge.

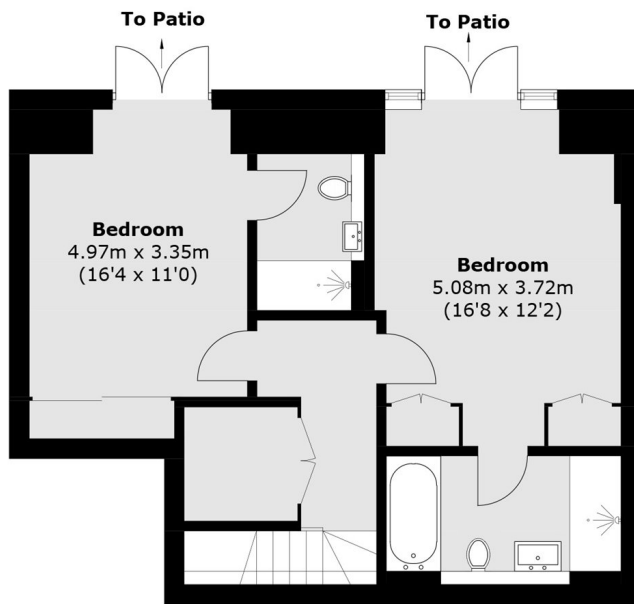
Located in the heart of Aldgate East, Goodman's Fields is just moments from the City, with Spitalfields Market, Brick Lane, and Whitechapel Gallery nearby. The area gives access to an array of amenities, including boutique cafes, shopping venues, restaurants and lively bars. Transport links include Aldgate East (District, Hammersmith&City) and Aldgate (Circle, Metropolitan) stations.

Features

- Two Double Bedrooms
- Private Residents Lounge
- 24 Hour Concierge
- Split Level
- Private Terrace
- Central Location



Leman Street, London, E1



Lower Ground Floor



Ground Floor

Total area (approx.): 111.8 sq. m (1,203.4 sq. ft)