



## Beaufort Gardens, E1

### £550,000

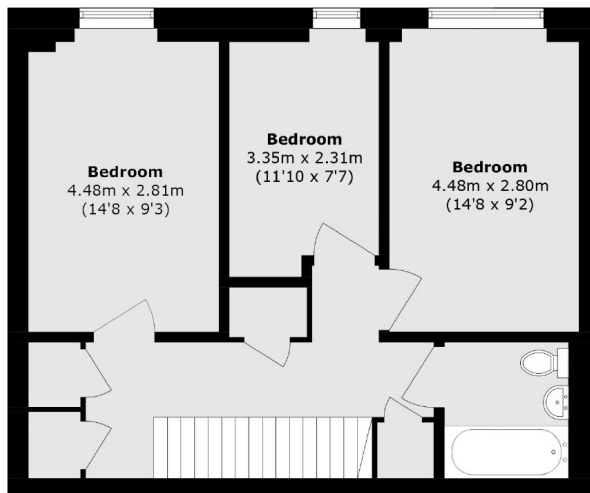
A large, three bedroom, split level apartment located within this purpose built development. This property, located on the ground floor, offers a separate kitchen and reception room, both of which provide access to the private patio. The first floor consists of two generous double bedrooms and a third bedroom which is currently being used as a home office. The development offers communal gardens.

Ideally located for easy transport throughout the City and beyond via Stepney Green (District, Hammersmith&City) and Whitechapel (Elizabeth, Windrush), as well as multiple bus routes, and Limehouse for the DLR. Nearby Mile End Park and Stepney City Park Farm offer open green spaces.

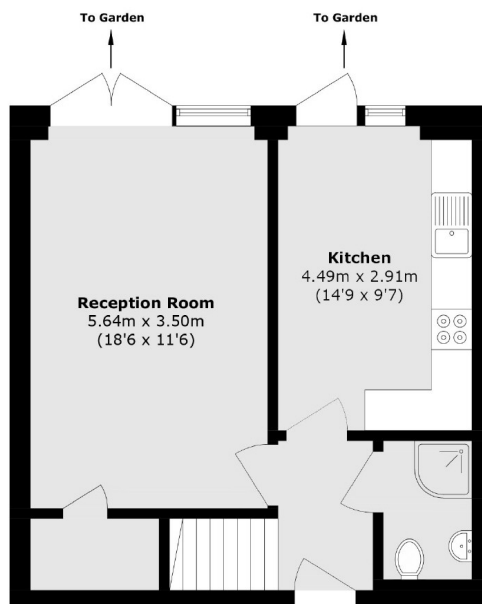
### Features

- Three Double Bedrooms
- Split Level
- Communal Gardens
- Private Patio
- Double Glazing
- Purpose Built Development

# Beaufort Gardens, London, E1



**First Floor**



**Ground Floor**

Total area (approx.): 98.5 sq. m (1060.2 sq. ft)