



Arbour Square, E1
£1,000,000

Dexters



Arbour Square, E1

Grade II listed Georgian Townhouse set within the sought after Arbour Square, this freehold home is arranged over three floors. The ground floor entrance level has a fully integrated kitchen with separate dining area that leads out to the spacious living room with bi-fold doors which open onto the west facing garden. This floor also has a downstairs WC.

The first floor offers the first double bedroom, overlooking Arbour Square Gardens, and the three piece family bathroom, and the second floor consists of the final two double bedrooms, one of which overlooks the garden. The large sashed windows and bi-fold doors on the ground level allow the entire property to benefit from a generous amount of natural light.

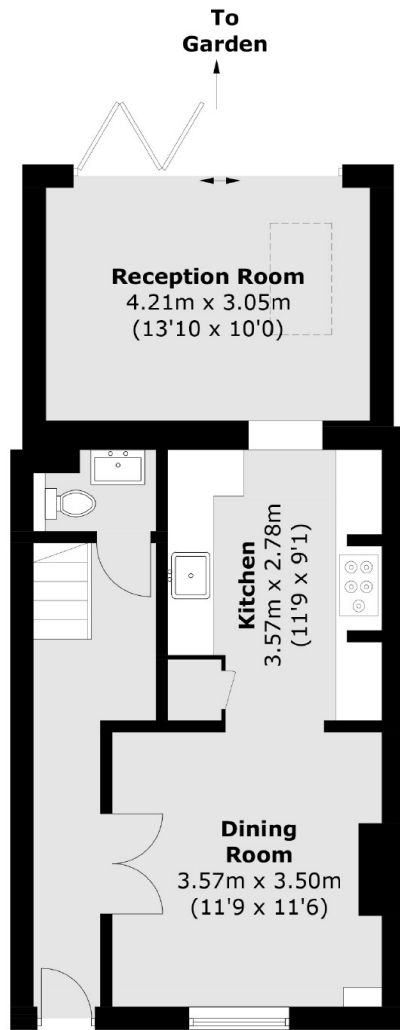
Arbour Square is set between Canary Wharf, Shoreditch and The City making the area great for work and leisure. Transport links include Whitechapel (Elizabeth Line, District and Hammersmith & City Lines) and Limehouse (DLR and National Rail) stations for a convenient commute to all corners of the City and beyond. The green spaces of Arbour Square Gardens and Stepney City Farm are within a short distance.

Features

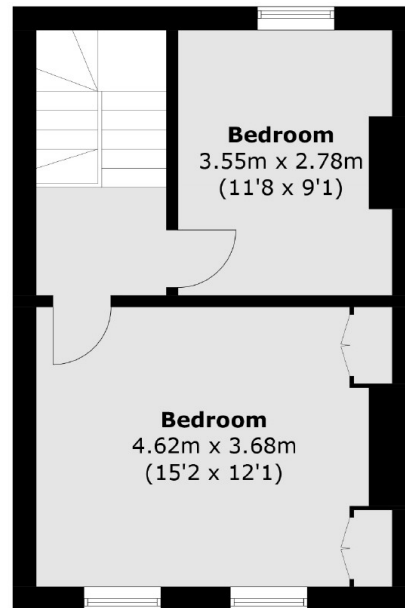
- Three Bedrooms
- Grade II listed
- Georgian Townhouse
- Sashed Windows
- West Facing Garden
- Sought After Location



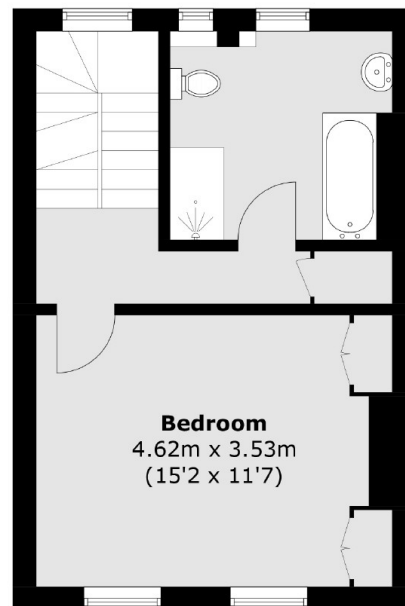
Arbour Square, London, E1



Ground Floor



Second Floor



First Floor

Total area (approx.): 114.4 sq. m (1,231.3 sq. ft)