

Leyden Street, E1

£625,000

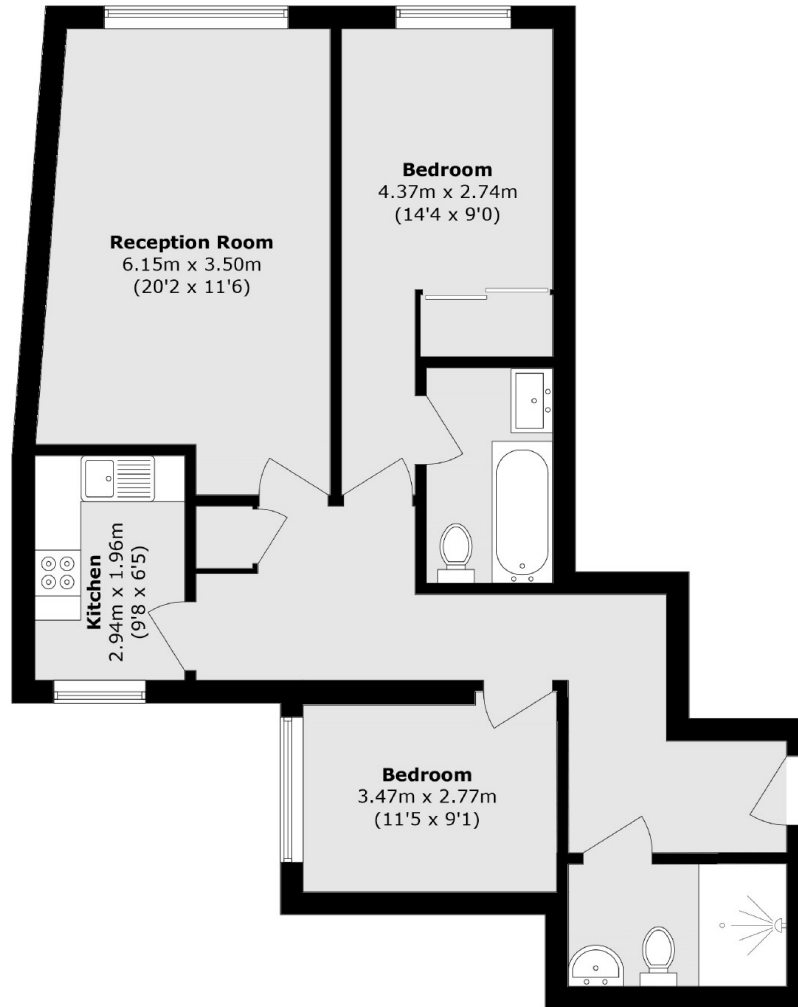
This two-bedroom, third floor apartment, is located in the attractive 'art-deco' style building, just a short distance from Spitalfields Market. The apartment benefits from a large living room, with space to dine, a separate kitchen with fully integrated appliances and two double bedrooms, both with in-built storage and the principle bedroom has an en-suite. The property benefits from further storage in the hallway where you will also locate the family bathroom.

Leyden Street is situated in the heart of Liverpool Street, providing good access to many amenities including local pubs, restaurants and gyms. Well connected with easy routes into Aldgate East, Tower Bridge and Canary Wharf also providing a convenient location with transport links to all corners of the City and beyond.

Features

- Two Double Bedrooms
- Two Bathrooms
- Secure Entry
- Lift Access
- City Views
- Art Deco
- Porter

Leyden Street, London, E1



Total area (approx.): 78.0 sq. m (839.5 sq. ft)