



Poole Street, N1

£750,000

A large two bedroom apartment in the award-winning Gainsborough Studios. This property offers a spacious, open plan reception/kitchen with hardwood flooring, large windows and built in appliances. Both double bedrooms feature built in storage space and floor to ceiling windows which allow for plenty of natural light. The primary bedroom, which is large enough for a home office, also features a walk in wardrobe space and an en suite.

Located just over half a mile from Old Street Underground (Northern line, National Rail) and Hoxton Station (Overground), the Elizabeth Line is within a ten minute bus ride. The property is walking distance to the many

Features

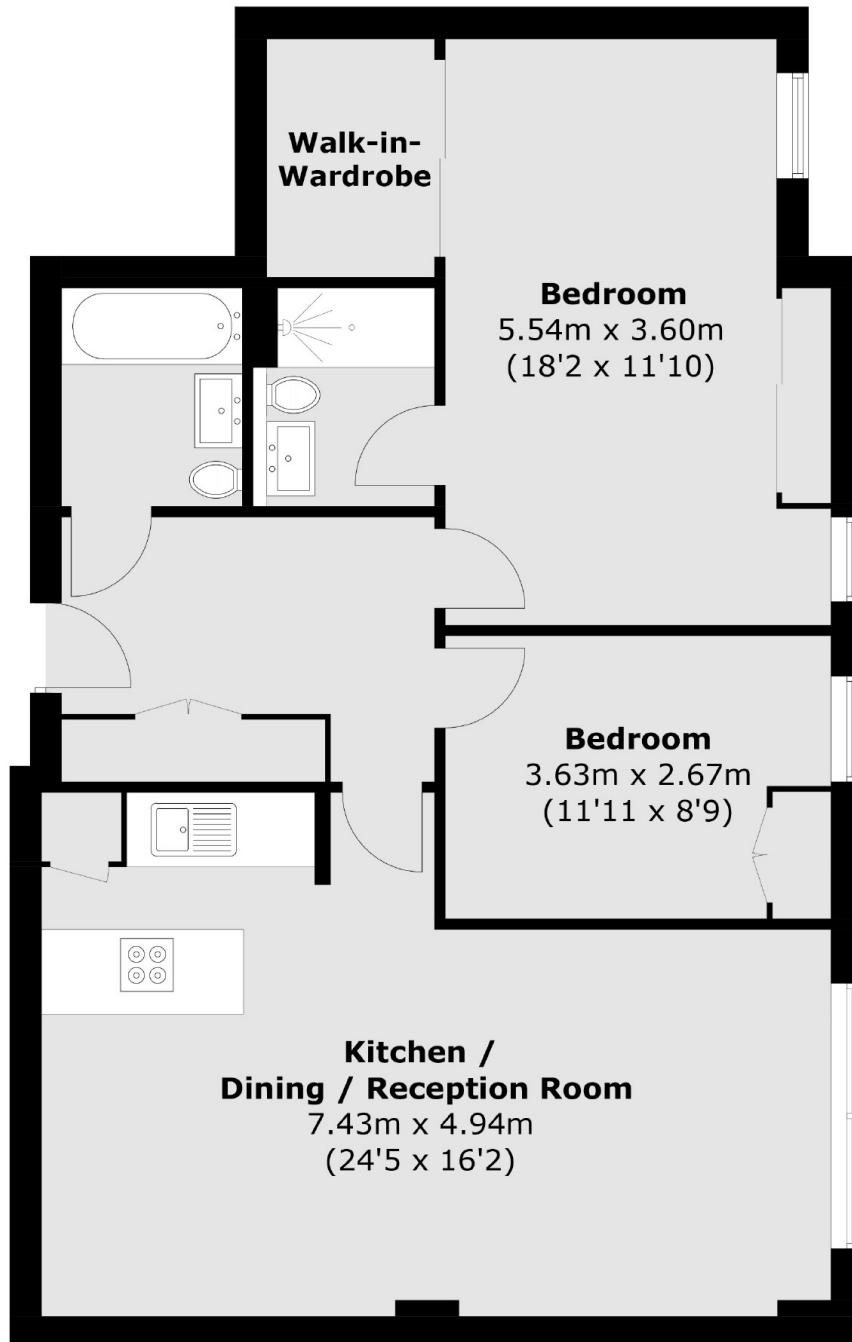
- Two Double Bedrooms
- En Suite
- Chain Free
- Popular Development
- Modern Design
- Great Location



Poole Street, N1



Poole Street, London, N1



Total area (approx.): 82.6 sq. m (889.1 sq. ft)