



**Temple Yard, E2**  
**£1,100,000**

**Dexters**



## Temple Yard, E2

Three bedroom freehold house arranged over four floors set within a sought after location and within a private, gated mews. The upper and lower ground floors are a virtual mirror image, both having a smart design with a large double bedroom with ample storage and modern en-suites. The first floor consists of the large main living area, a bright open plan, fully integrated kitchen, and space to dine. The second floor offers a multifunctional space. It is currently used as a home office but would also accommodate a further double room, with fitted storage and en-suite. This area has a generous amount of natural light complimented by skylight.

The exclusive Temple Yard Mews is on the boundary of the famed Columbia Road. Shoreditch, Cambridge Heath, Hoxton and the City are all within a short walking distance whilst being equidistant from Cambridge Heath (Overground) and Bethnall Green (Central Line) stations giving access to convenient travel to all corners of the City and beyond.

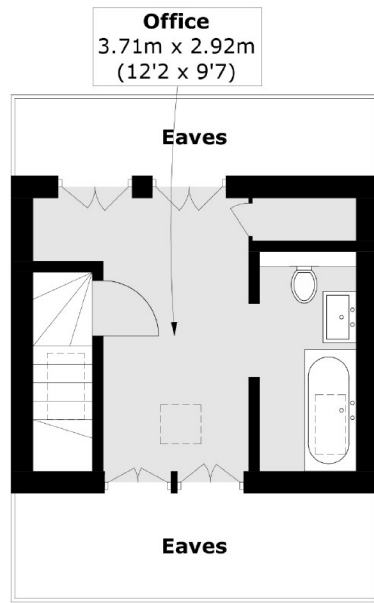
### Features

- Three Bedrooms
- Three Bathrooms + WC
- Private Mews Development
- Sought After Location
- Freehold House
- Modern Interiors

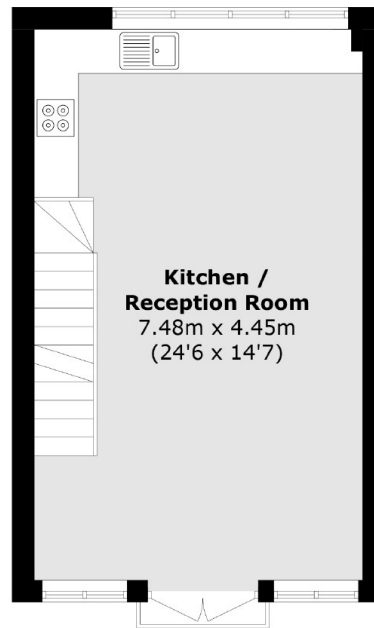




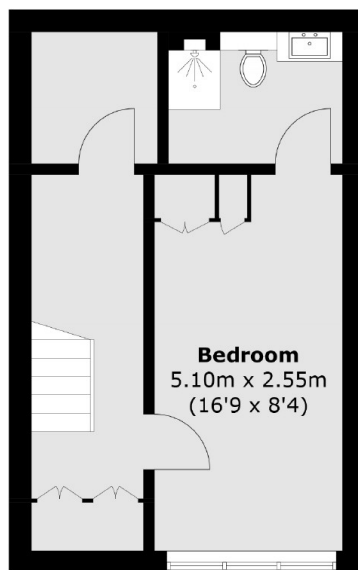
# Temple Yard, London, E2



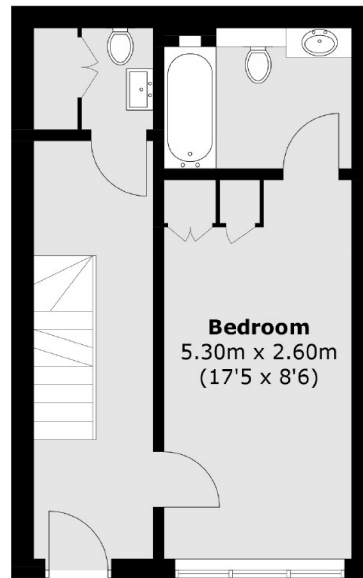
**Second Floor**



**First Floor**



**Lower Ground Floor**



**Ground Floor**

Total area (approx.): 111.2 sq. m (1196.8 sq. ft)  
(Excluding Eaves)

## Dexters

Shoreditch  
44 Great Eastern Street  
London  
EC2A 3EP  
Sales  
0207 483 6371

Energy Rating: C. We aim to make our particulars both accurate and reliable. However they are not guaranteed; nor do they form part of an offer or contract. If you require clarification on any points then please contact us, especially if you're traveling some distance to view. Please note that appliances and heating systems have not been tested and therefore no warranties can be given as to their good working order.

 **RICS** | Regulated  
Estate Agent  
and Letting Agent

[dexters.co.uk](https://www.dexters.co.uk)