



**New Drum Street, E1**  
**£890,000**

**Dexters**



## New Drum Street, E1

A three bedroom, two bathroom apartment on the sixteenth floor of the popular Wiverton Tower building. This property offers a large, open plan reception/kitchen with built in appliances and modern design, which leads on to a winter garden with far reaching views. All three double bedrooms feature wooden flooring, large windows and plenty of space for storage. The property also benefits from two contemporary family bathrooms and built in storage throughout.

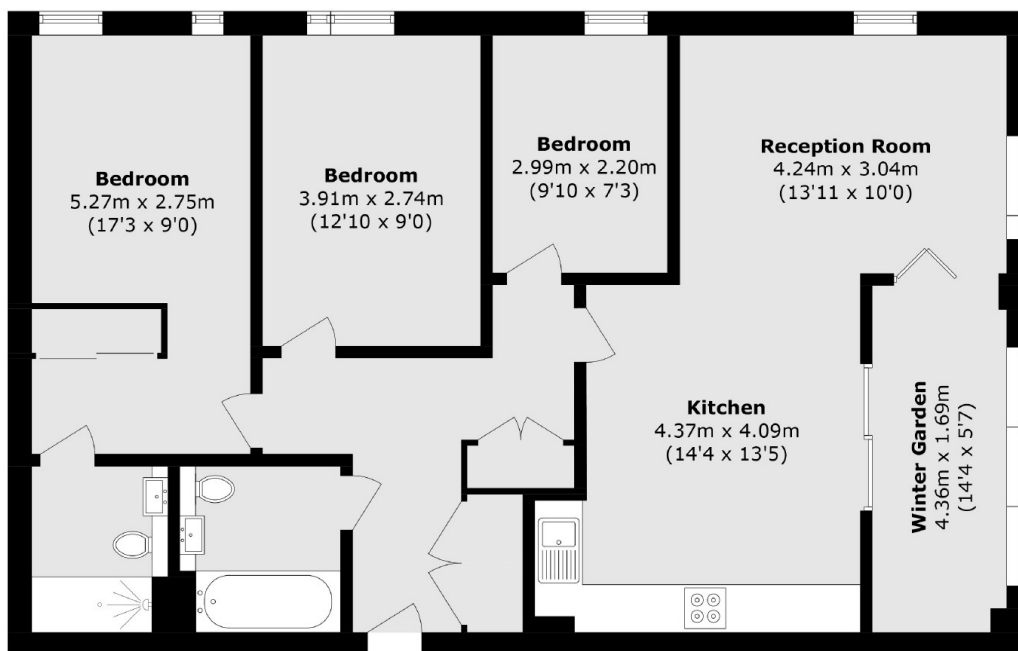
Located beside Aldgate East, this property is well positioned for travel to all corners of the City via Aldgate (Circle, Metropolitan), Aldgate East (Hammersmith&City, District) and Bank for the DLR. The local area, ad Whitechapel beyond, offer a vast selection of restaurants, bars and shopping opportunities.

### Features

- Three Double Bedrooms
- Two Bathrooms
- Winter Garden
- Open Plan
- Concierge
- Residents Gym



# New Drum Street, London, E1



Total area (approx.): 91.9 sq. m (989.2 sq. ft)

## Dexters

Shoreditch  
44 Great Eastern Street  
London  
EC2A 3EP  
Sales  
0207 483 6371

Energy Rating: B. We aim to make our particulars both accurate and reliable. However they are not guaranteed; nor do they form part of an offer or contract. If you require clarification on any points then please contact us, especially if you're traveling some distance to view. Please note that appliances and heating systems have not been tested and therefore no warranties can be given as to their good working order.

 **RICS** | Regulated  
Estate Agent  
and Letting Agent

[dexters.co.uk](https://www.dexters.co.uk)