



Tabernacle Street, EC2A  
£1,500,000

**Dexters**



## Tabernacle Street, EC2A

Set within a characterful former warehouse in the heart of Shoreditch, this expansive two-bedroom apartment occupies the upper floors of a sought-after City Lofts conversion. The space underwent a complete, architect-designed renovation in 2021 by Architecture for London, bringing a refined material palette and high-spec contemporary detailing to its industrial bones.

The upper level is arranged as a vast open-plan living space, flooded with natural light via double-height glazing. A bespoke kitchen with integrated appliances anchors the room, while exposed brickwork and steel-framed windows nod to the building's warehouse heritage. A sculptural spiral stair descends to two generous double bedrooms, with bespoke built-in storage and access to a large, private patio. The principal suite includes a sleek en suite bathroom (with bath and shower); second high-spec shower room completes the plan. The property has an external storage unit 2.85m by 1.25m of which the owner has sole use.

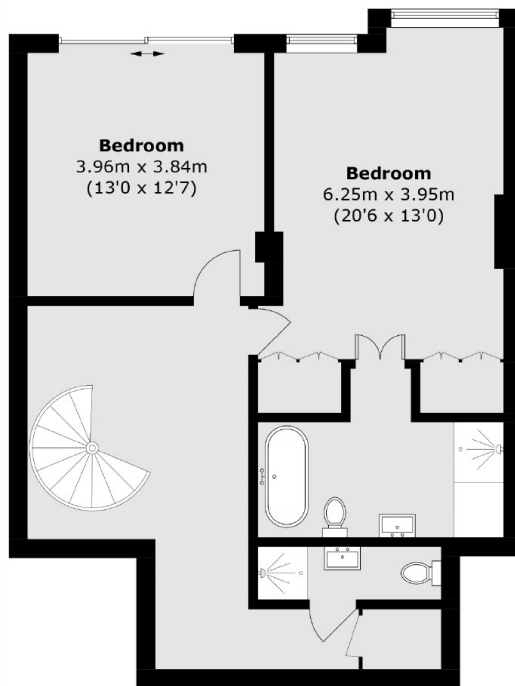
Tabernacle Street sits moments from the Shoreditch Triangle, with Manteca, Clove Club, and a rich array of local restaurants, galleries and cafés on the doorstep. Excellent transport links are available with Old Street underground just feet away and Liverpool Street and Shoreditch High Street stations a short walk.

### Features

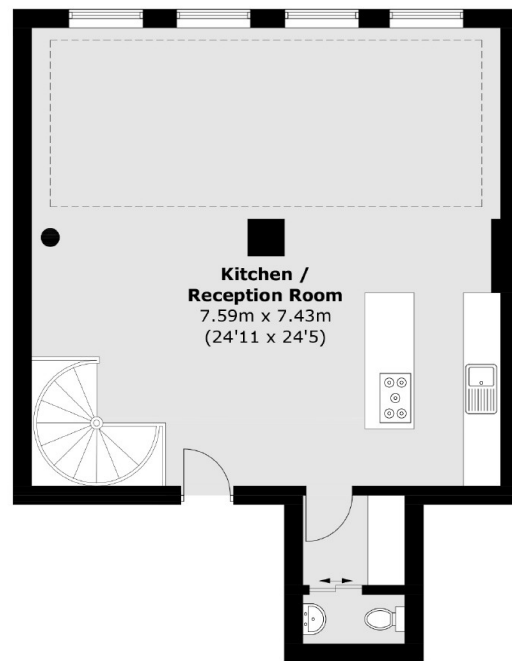
- Two Bedroom
- Two Bathroom + WC
- Warehouse Conversion
- Double Height Ceilings
- Recently Refurbished
- Underfloor heating throughout



Tabernacle Street,  
London, EC2A



**Lower Ground Floor**



**Ground Floor**

Total area (approx.): 132.5 sq. m (1,426.2 sq. ft)