



Hague Street, E2  
£1,250,000

**Dexters**



## Hague Street, E2

Four Bedroom Victorian Mid terraced freehold House in a sought after location. The house is bright and spacious throughout, with the ground floor boasting a large reception room, a separate kitchen with breakfast bar, and one of the four bedrooms featuring an en suite, as well as access to the courtyard style garden. The first floor consists of the remaining three double bedrooms and a family bathroom.

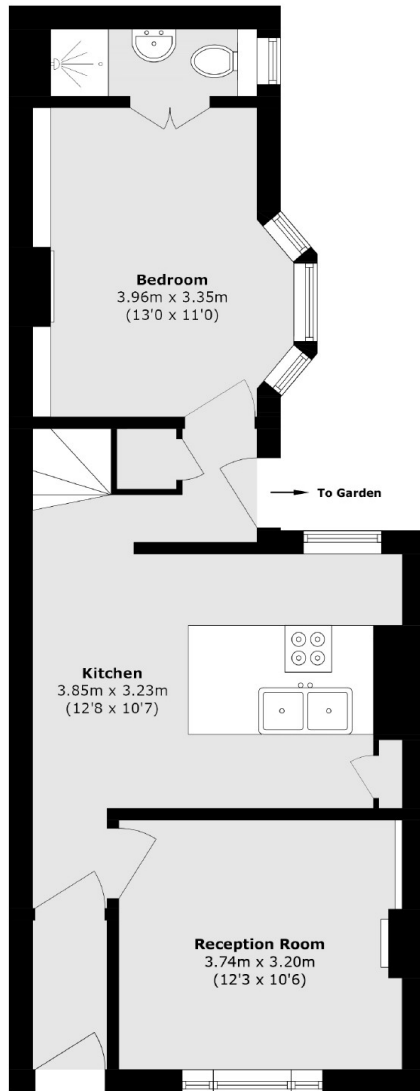
Hague Street is set between the vibrant Bethnal Green Road and open green space of Weavers' Field. Within a short distance of both Bethnal Green Tube and Underground station this location provides convenient travel links throughout the City. The vibrant Columbia Road Flower Market and Broadway Market are within easy reach offering an array of shops and dining experiences whilst Shoreditch and the City are also accessible for a wider array of entertainment venues.

### Features

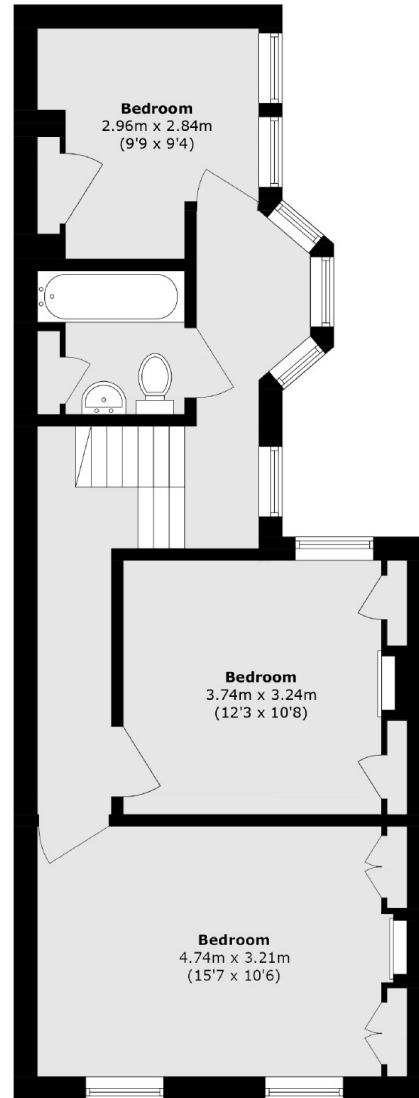
- Four Bedrooms
- Victorian House
- Freehold
- Sought After Location
- Large Separate Kitchen
- Private Courtyard Garden



# Hague Street, London, E2



**Ground Floor**



**First Floor**

Total area (approx.): 103.2 sq. m (1110.8 sq. ft)