



## Cyprus Street, E2

£3,500 Per calendar month

A two double bedroom, Victorian House around the corner from Victoria Park. It has a double reception room with double doors leading to the garden, a fully equipped kitchen and two double bedrooms upstairs.

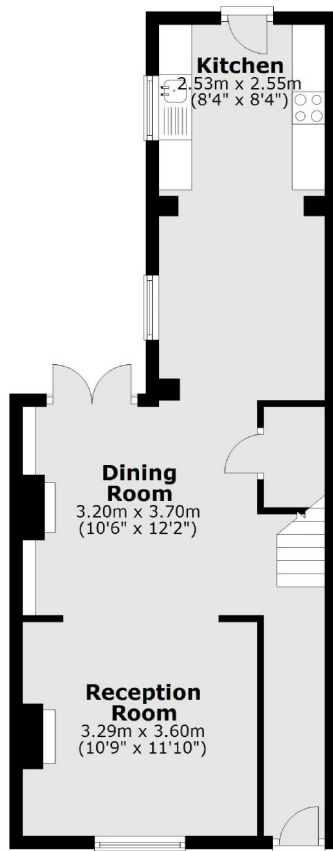
Cyprus Road is a quiet tree lined street under half a mile from Bethnal Green station and Cambridge Heath overground station. While a Victoria Park and the Regents Canal are within a quarter of a mile.

### Features

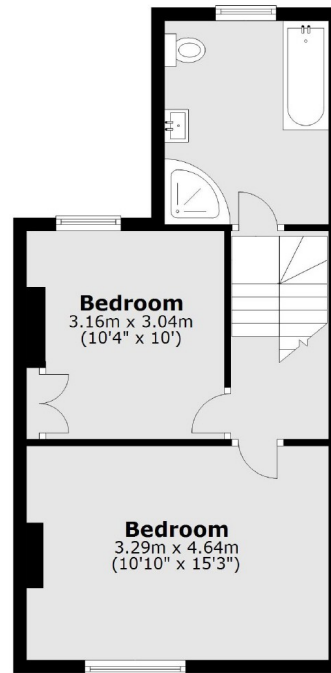
- Two Double Bedrooms
- Double Reception Room
- Period Features
- South Facing Garden
- Victoria Park
- Great Location

# Cyprus Street, London, E2

## Ground Floor



## First Floor



Total area: approx. 84.0 sq. metres (904.3 sq. feet)