



## Cleveland Grove, E1

### £450,000

A stylishly presented two bedroom ground-floor apartment with modern interiors set within a secure gated-development. The property has a generously sized living room with ample space to relax and dine, with a separate fully integrated kitchen. The property's two bedrooms are both good sized doubles with plenty of space for storage.

This dual aspect property has been fully redecorated and is set within this popular, well maintained, secure resident managed development on Cleveland Grove, and has access to two secure parking spaces.

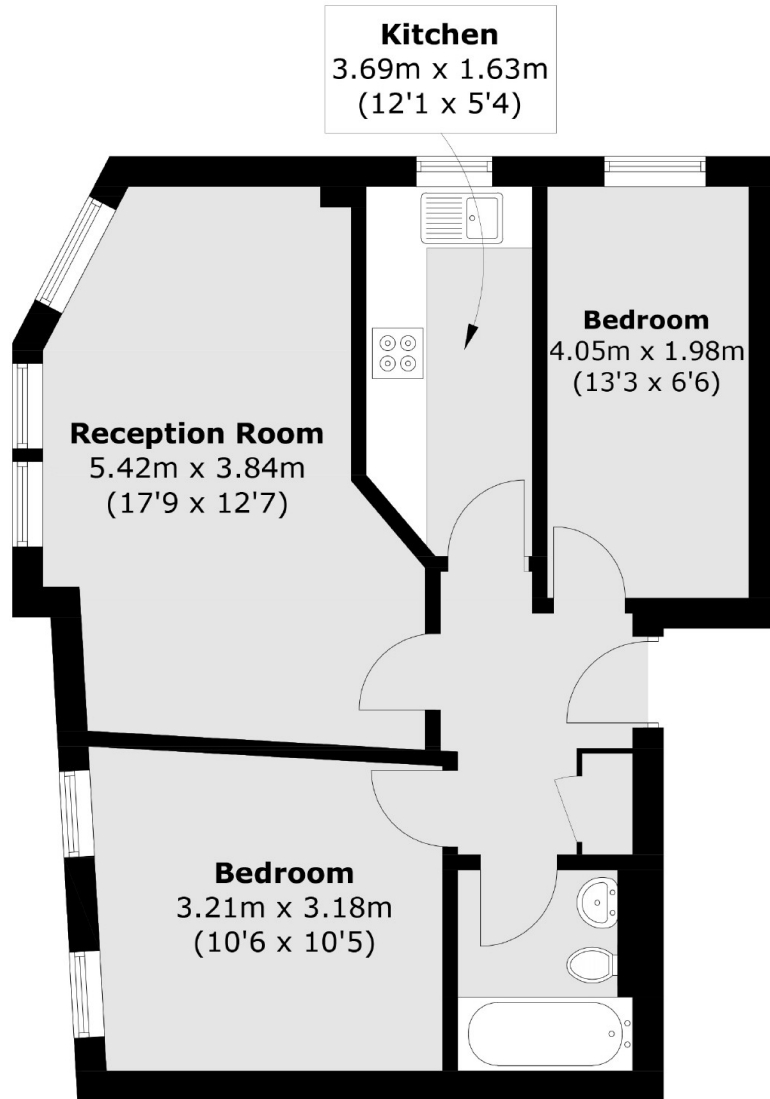
Ideally positioned just off Mile End Road, this development is moments from a vibrant mix of local amenities. You are within easy reach of Shoreditch, Bethnal Green, Spitalfields, and Brick Lane, offering nearby cinema, great bars, restaurants and popular entertainment venues. Excellent transport links include walking distance to: Whitechapel (Elizabeth, Overground, District, and Hammersmith & City lines); Stepney Green (District and Hammersmith & City Lines); and Bethnal Green (Central Line) Stations - providing swift access to the City, Central London & Heathrow airport.

Multiple bus & cycle routes run along Mile End Road, and green open spaces such as Weavers Fields, Bethnal Green Gardens, Stepney Green Park, and Mile End Park are all within walking distance.

### Features

- Two Bedrooms and Large Lounge
- Gated Development
- Two Parking Spaces
- Great transport links
- Sought After Location
- Dual Aspect

# Cleveland Grove, London, E1



Total area (approx.): 52.2 sq. m ( 561.9 sq. ft)

## Dexters

Shoreditch  
44 Great Eastern Street  
London  
EC2A 3EP  
Sales  
0207 483 6371

Energy Rating: C. We aim to make our particulars both accurate and reliable. However they are not guaranteed; nor do they form part of an offer or contract. If you require clarification on any points then please contact us, especially if you're traveling some distance to view. Please note that appliances and heating systems have not been tested and therefore no warranties can be given as to their good working order.

 **RICS** | Regulated  
Estate Agent  
and Letting Agent

[dexters.co.uk](https://www.dexters.co.uk)