



Boundary Street, E2
£900,000

Dexters



Boundary Street, E2

A two bedroom, two bathroom apartment set within a warehouse conversion on one of Shoreditch's most highly regarded residential streets. The property has a large open plan living room with fully integrated kitchen and space to dine which leads out onto the properties private terrace, a unique feature for this building. The property has two generous bedrooms with ample built in storage, one modernised en-suite and family bathroom.

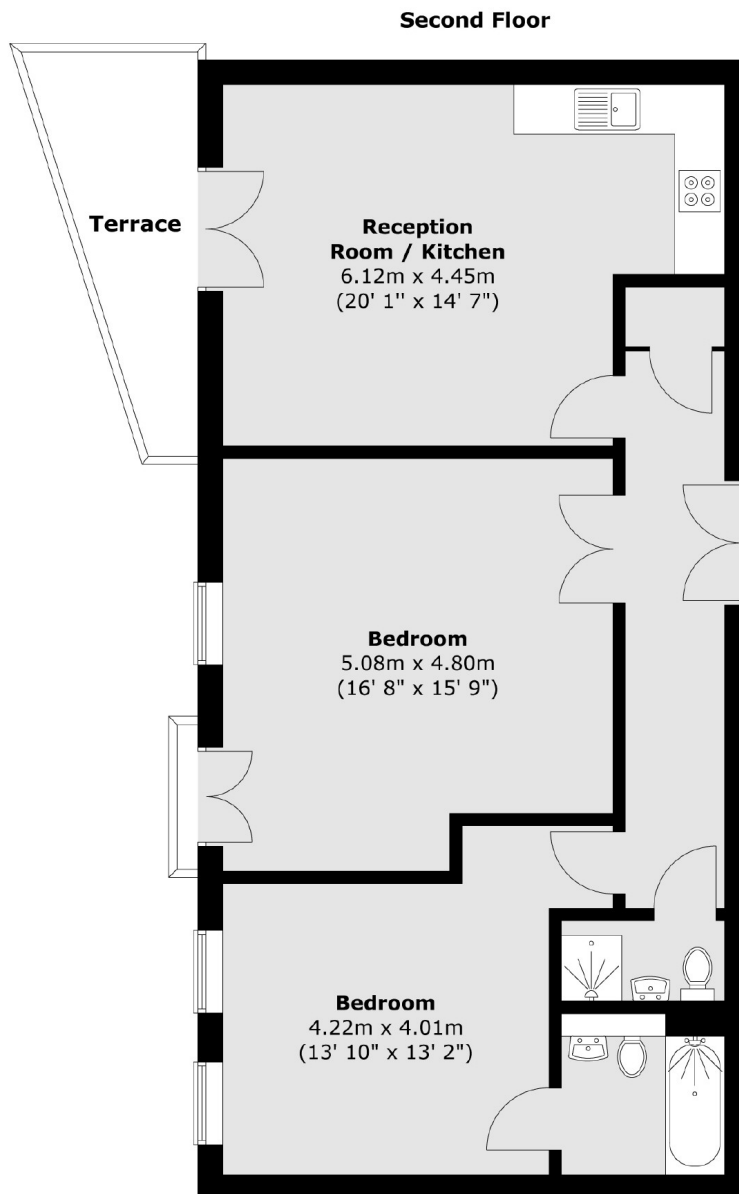
Set upon Boundary Street, one of the areas most highly regarded locations a wide variety of restaurants, boutique cafe's, bars and entertainment venues of Shoreditch are all within easy reach. Spitalfields and Columbia Road markets are also close by. Transport links include Shoreditch High Street, Hoxton, Old Street and Liverpool Street stations for convenient travel to all corners of the City and beyond.

Features

- Two Bedrooms
- Two Bathrooms
- Warehouse Conversion
- Open Plan



Boundary Street, London, E2



Total area (approx.) : 83.6 sq. m (900 sq. ft)
Total terrace area (approx.) : 6.6 sq. m (71 sq. ft)
Total balcony area (approx.) : 0.5 sq. m (5 sq. ft)