



## Wood Close, E2

### £475,000

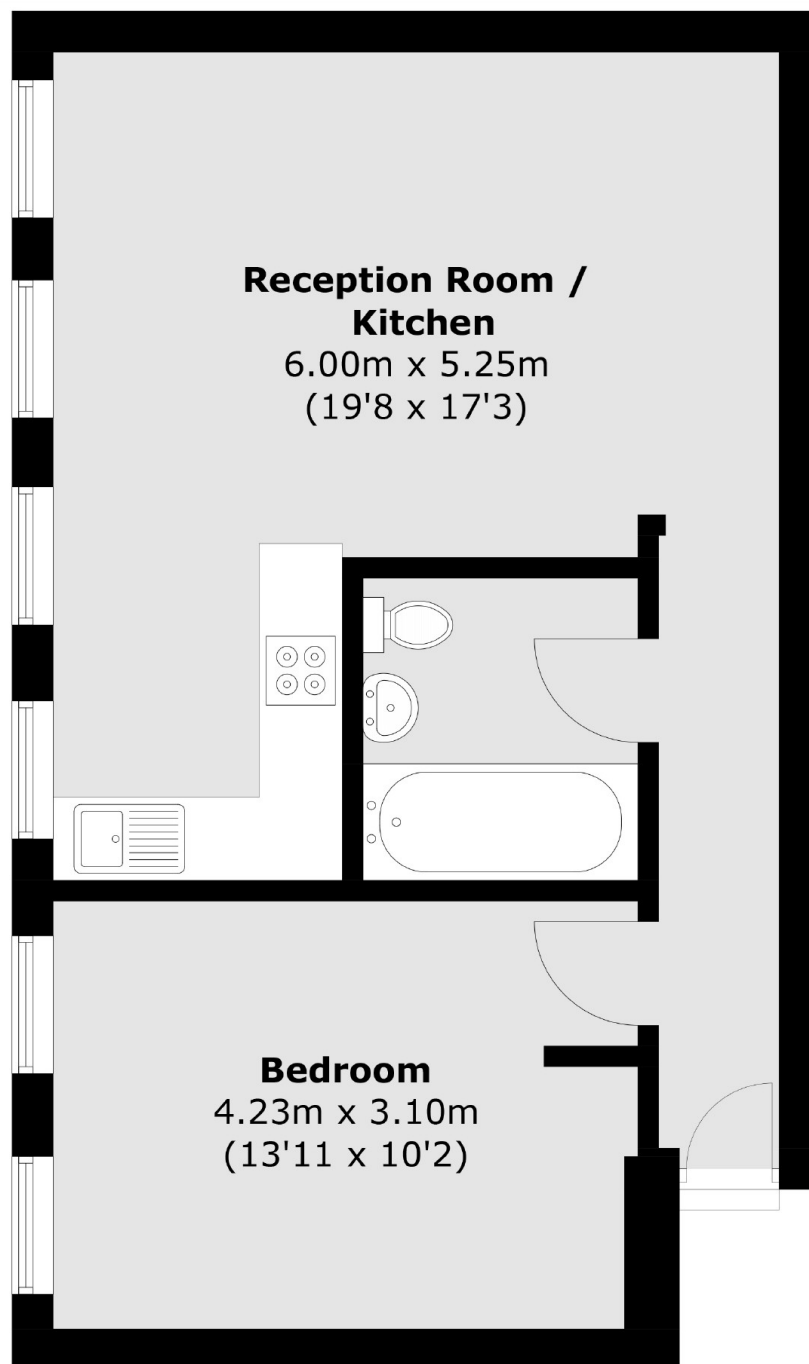
A one bedroom period conversion overlooking St Matthews Church Gardens and minutes from Shoreditch and Brick Lane. The property has a spacious open plan living/kitchen area with space to dine, bathroom and double bedroom with built in wardrobes. It is being sold with a Share of Freehold and no onward chain.

Wood Close is a quiet one-way street a short distance to vibrant Shoreditch and Brick Lane and its fantastic choice of bars, restaurants and nightlife. Redchurch Street, Columbia Road and Spitalfields Market are also within walking distance. Shoreditch High Street and Bethnal Green Overground Stations are less than half a mile away and Liverpool Street, Bethnal Green Underground stations are less than one mile.

### Features

- One Double Bedroom
- Period Conversion
- Brick Lane
- Park Views
- Secure Bike Storage
- Chain Free
- Share of Freehold

# Wood Close, London, E2



Total area (approx.): 47.3 sq. m (509.1 sq. ft)

## Dexters

Shoreditch  
44 Great Eastern Street  
London  
EC2A 3EP  
Sales  
0207 483 6371

Energy Rating: C. We aim to make our particulars both accurate and reliable. However they are not guaranteed; nor do they form part of an offer or contract. If you require clarification on any points then please contact us, especially if you're traveling some distance to view. Please note that appliances and heating systems have not been tested and therefore no warranties can be given as to their good working order.

 **RICS** | Regulated  
Estate Agent  
and Letting Agent

dexters.co.uk