



Folgate Street, E1

£525,000

One double bedroom apartment set within a secure development in the heart of Spitalfields on Folgate Street. The apartment has a spacious living room with a separate, fully integrated kitchen, a double balcony overlooking Spitalfields Market, and an on site concierge. The property also has a secure and allocated underground parking space.

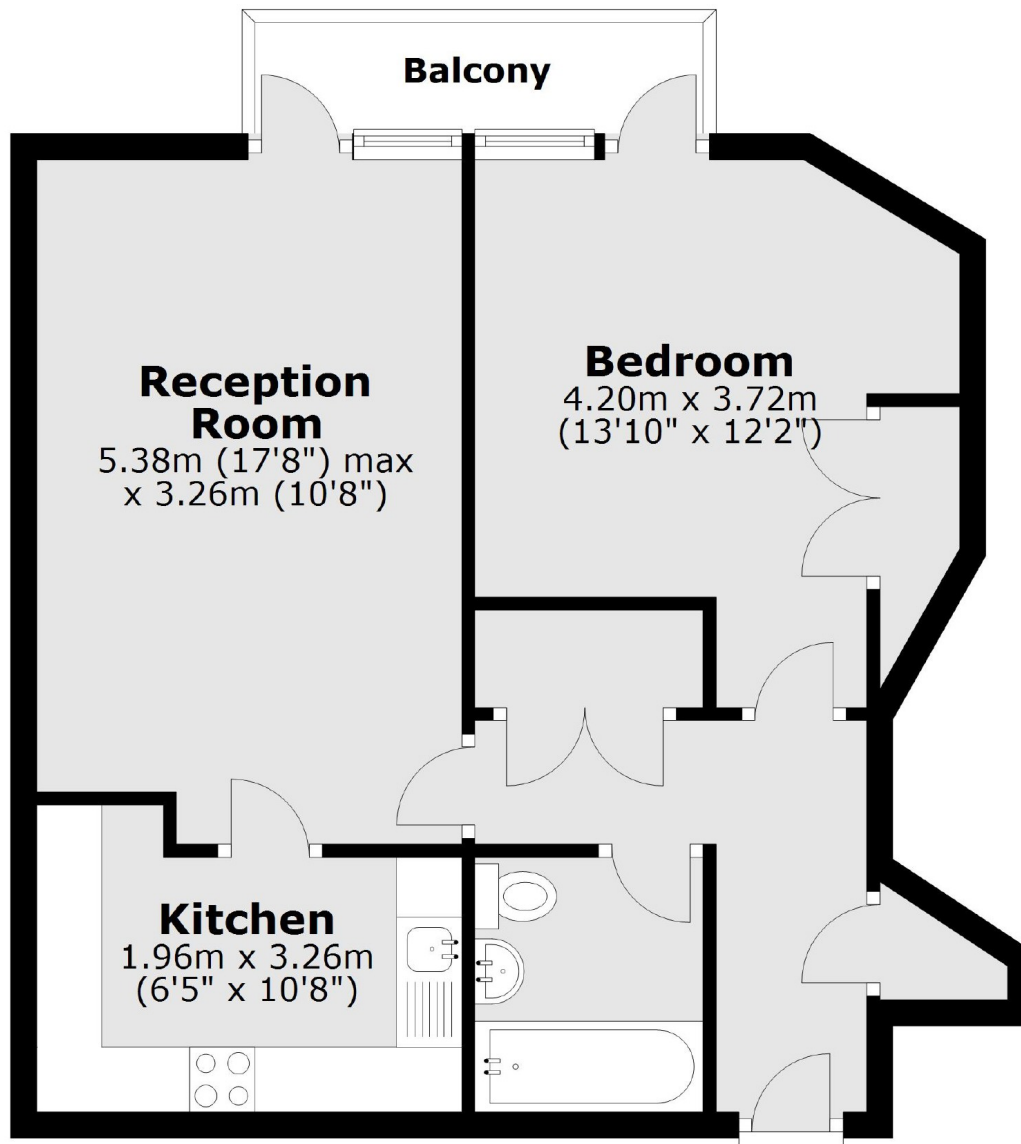
Folgate Street is a purpose built development on a cobblestoned street next to Spitalfields Market. This property offers a wide array of amenities in the City and Shoreditch. Nearby transport links include Liverpool Street (Elizabeth Line, Weaver, Central and Circle, Hammersmith & City Lines) and Shoreditch High Street (Overground) stations for convenient travel to all corners of the City and beyond.

Features

- One Bedroom Apartment
- Sought After Location
- Private Balcony
- On Site Concierge
- Underground Parking
- Purpose Built Development

Folgate Street,
London, E1

1st Floor



Total area: approx. 49.3 sq. metres (530.7 sq. feet)