



## Moor Lane, EC2Y

### £1,125,000

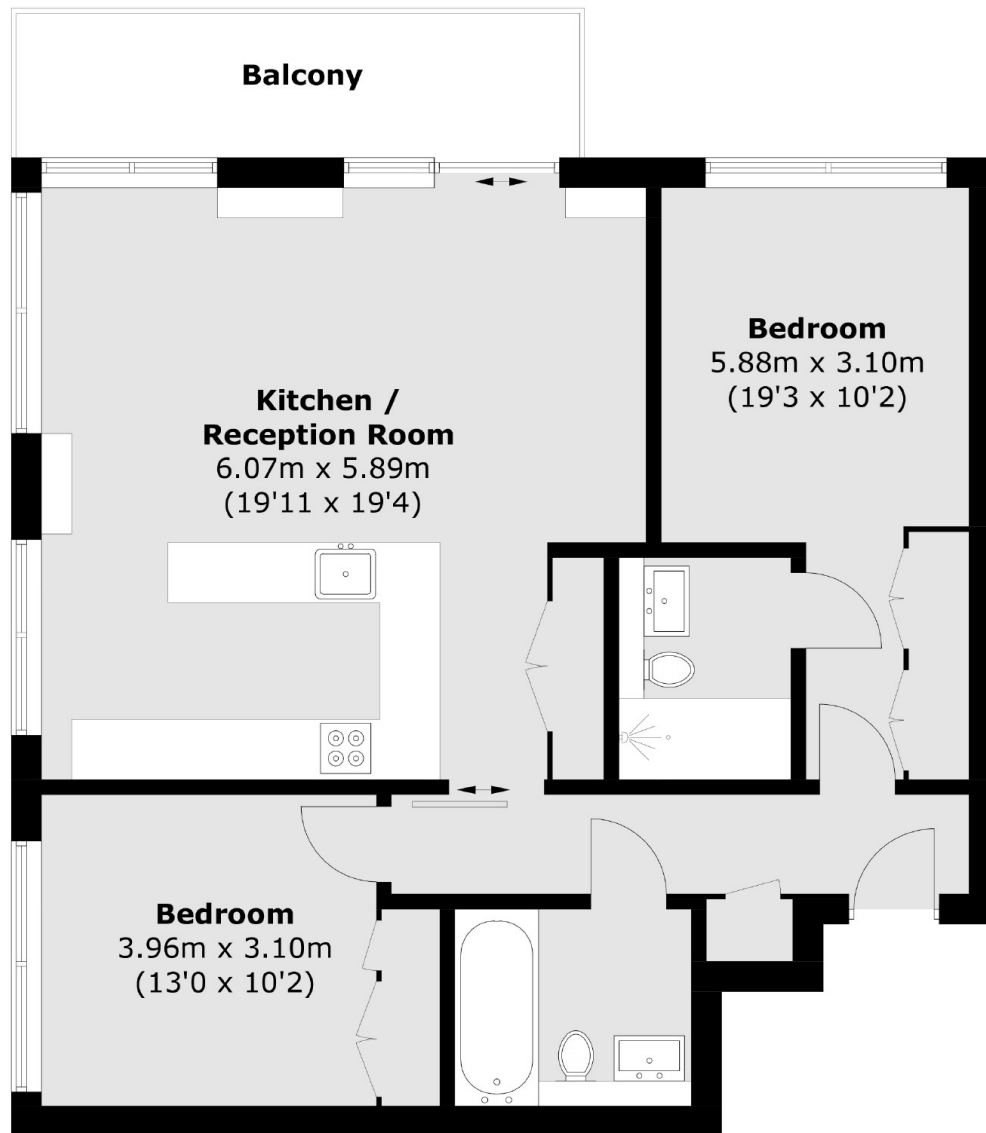
This apartment is located on the 15th floor of the highly sought after development, The Heron, in EC2. The apartment offers a large open-plan living area with fully integrated kitchen and space to dine which leads out to the private balcony with far reaching views. The property has two double bedrooms with built-in storage, one of which is en-suite. The property benefits from a wealth of natural light throughout made possible with the large floor to ceiling windows. The Heron offers a range of high end residents facilities which includes a 24hr concierge service, private rooftop members club, cinema room, gym, boutique café and private dining room.

The Heron is ideally located a short distance from Moorgate (Hammersmith&City, Northern, Metropolitan), Liverpool Street (Elizabeth, Central), and The Barbican. The local area offers a selection of notable bars, restaurants and cafés.

### Features

- Two Bedrooms
- Two Bathrooms
- Secure Underground Parking
- Private Balcony
- 24 Hour Concierge
- Exclusive Facilities

Moor Lane,  
London, EC2Y



Total area (approx.): 79.5 sq. m (855.7 sq. ft)  
Balcony: 8.1 sq. m (87.1 sq. ft)