



## Candle Street, E1

£475,000

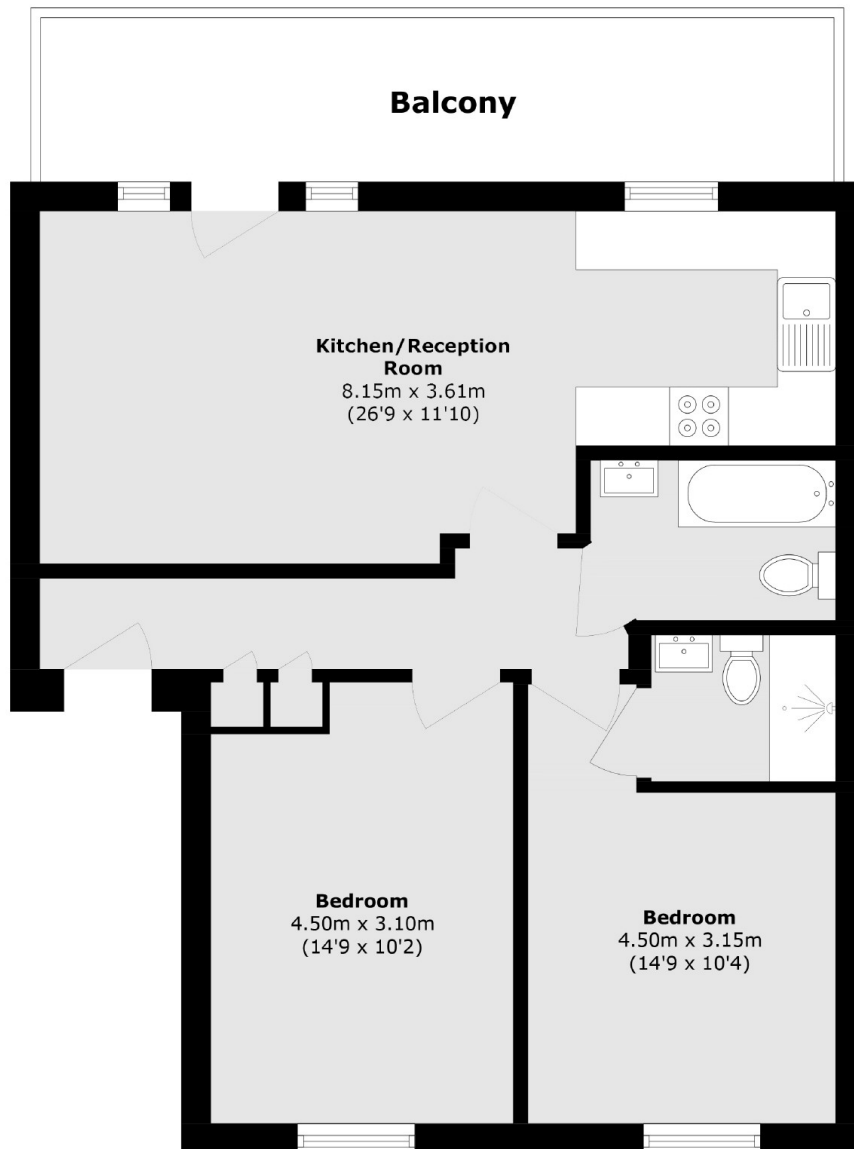
This top floor modern, purpose built, two bedroom apartment offers an excellent, bright, living space that leads onto the private, south facing, balcony. Comprising two double bedrooms, a family bathroom and a large separate kitchen and off-street parking.

Conveniently situated between the business districts of Canary Wharf and the City with Stepney Green and Mile End Underground and Limehouse DLR stations nearby. The property also benefits from being just 0.2 miles from Mile End Park.

### Features

- Two Double Bedrooms
- Top Floor
- Off-Street Parking
- Private Balcony
- South Facing
- Double Glazing Windows

Candle Street,  
London, E1



Total area (approx.): 68.2 sq. m (734.1 sq. ft)

Balcony area (approx.): 13.6 sq. m (146.3 sq. ft)

**Dexters**

Shoreditch  
44 Great Eastern Street  
London  
EC2A 3EP  
Sales  
0207 483 6371

Energy Rating: C. We aim to make our particulars both accurate and reliable. However they are not guaranteed; nor do they form part of an offer or contract. If you require clarification on any points then please contact us, especially if you're traveling some distance to view. Please note that appliances and heating systems have not been tested and therefore no warranties can be given as to their good working order.

 **RICS** | Regulated  
Estate Agent  
and Letting Agent

dexters.co.uk