



## St. John's Place, EC1M

### £600,000

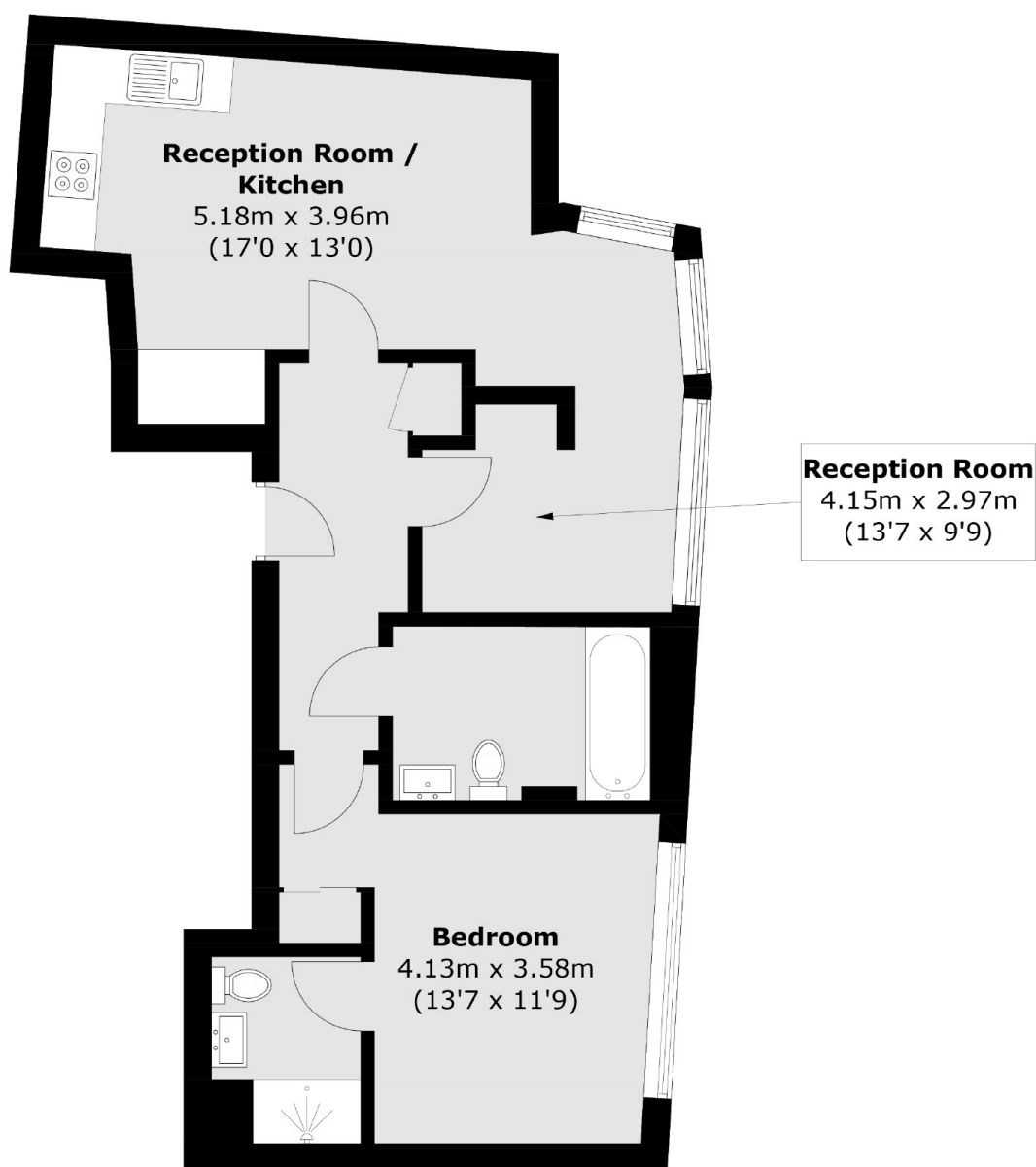
A spacious one bedroom apartment in a popular Clerkenwell development with lift access. This apartment has an open plan living room with a fully integrated kitchen and space to dine. The generous double bedroom has in-built storage and this area, along with the rest of the property benefits from a wealth of natural light from the large wall to wall windows.

St. Johns Place is set with a sought after location built on convenience with a wide array of restaurants, bars and further entertainment venue locally available. Farringdon Station is close by with access to the Elizabeth, Hammersmith and City, Circle and Metropolitan Lines, as well as Thameslink services. The City' is also within walking distance whilst Kings Cross St Pancras Station is one stop from Farringdon for easy access to the Eurostar terminal.

### Features

- One bedroom
- Private Development
- Integrated Kitchen
- Sought After Location
- Chain Free
- Wooden Flooring

# St. John's Place, London, EC1M



Total area (approx.): 56.1 sq. m (603.9 sq. ft)

## Dexters

Shoreditch  
44 Great Eastern Street  
London  
EC2A 3EP  
Sales  
0207 483 6371

Energy Rating: C. We aim to make our particulars both accurate and reliable. However they are not guaranteed; nor do they form part of an offer or contract. If you require clarification on any points then please contact us, especially if you're traveling some distance to view. Please note that appliances and heating systems have not been tested and therefore no warranties can be given as to their good working order.

 **RICS** | Regulated  
Estate Agent  
and Letting Agent

[dexters.co.uk](https://dexters.co.uk)