



## Shaftesbury Street, N1

£2,950 Per calendar month

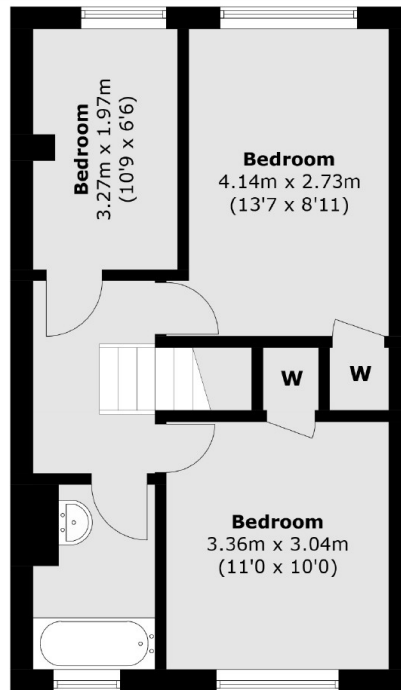
A three double bedroom split level apartment with a private garden. This property is spacious and light with really decent sized rooms, separate kitchen and living area.

The apartment is located in the heart of Hoxton and is just a short walk to the vibrant Old Street and Shoreditch area's which have numerous trendy bars, cafes and restaurants.

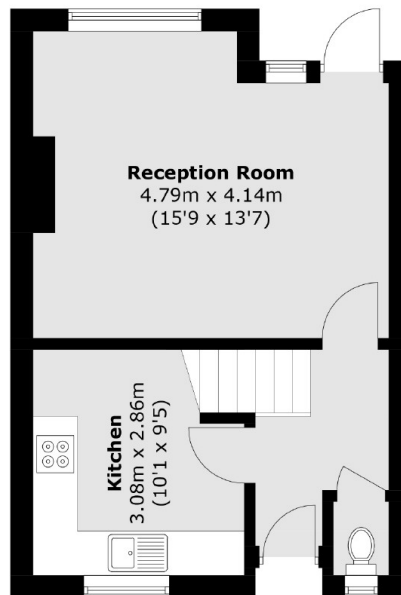
### Features

- Split Level
- Double Bedrooms
- Separate Kitchen
- Private Garden
- Great Location
- Great Transport Links

Shaftesbury Street,  
London, N1



**First Floor**



**Ground Floor**

Total area (approx.): 75.1 sq. m (808.3 sq. ft)

**Dexters**

Shoreditch  
44 Great Eastern Street  
London  
EC2A 3EP  
Lettings  
0207 483 6372

Energy Rating: D. We aim to make our particulars both accurate and reliable. However they are not guaranteed; nor do they form part of an offer or contract. If you require clarification on any points then please contact us, especially if you're traveling some distance to view. Please note that appliances and heating systems have not been tested and therefore no warranties can be given as to their good working order.

 **RICS** | Regulated  
Estate Agent  
and Letting Agent

[dexters.co.uk](https://www.dexters.co.uk)