



Christian Street, E1

£340,000

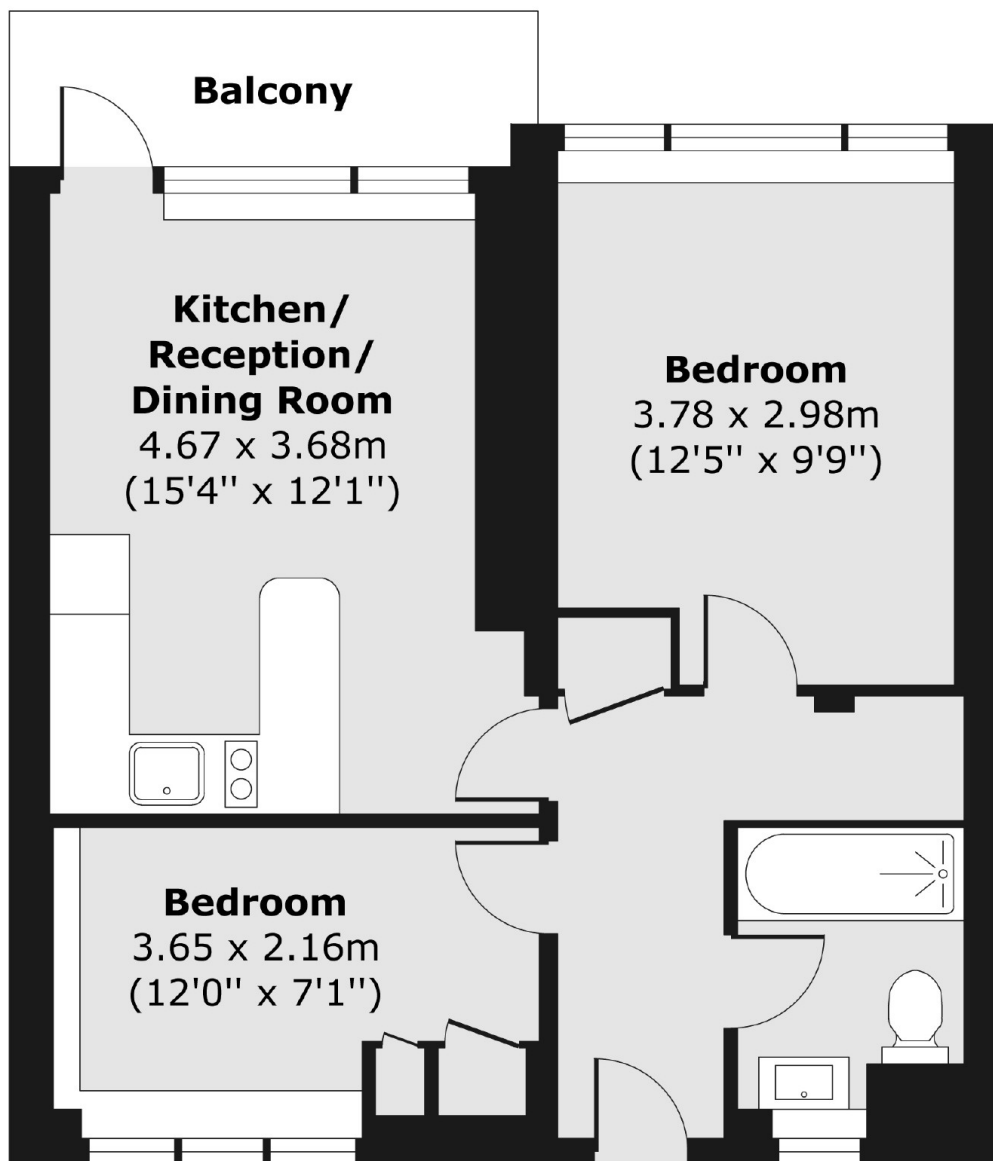
Two bedroom apartment set within a secure development with modern interiors throughout. The property boasts a bright, open plan living room with space to dine, this area leads out onto the properties private balcony overlooking a tranquil green space. The property has two double bedrooms and modern bathroom.

Convenient transport links available with Aldgate East, Shadwell and Whitechapel stations all within walking distance. These stations provide seamless access to the City, Canary Wharf, and beyond via the Elizabeth Line, District, Hammersmith & City, and Overground lines. A wide range of amenities are available from a short walk into the City and Shoreditch.

Features

- Two Bedrooms
- Private Balcony
- Secure Block
- Modern Interiors
- Sought After Location
- Balcony

**Christian Street,
London, E1**



Total area (approx.) 46.65 sq. m (502 sq. ft)
Balcony area (approx.) 3.46 sq. m (37 sq. ft)