



Durward Street, E1

£525,000

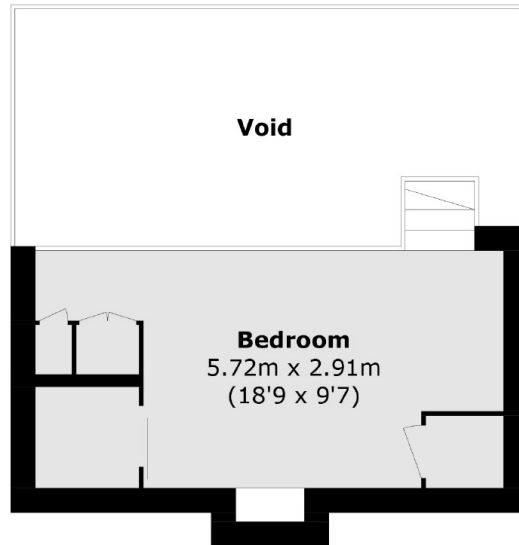
A unique one bedroom share of freehold property located in Trinity Hall, a Victorian school conversion which dates back to the 1830s. This split level apartment is comprised of a mezzanine bedroom overlooking the lounge and its double height windows, a semi open plan, modern, kitchen, a family bathroom and plenty of storage. Residents also have use of a communal roof terrace.

This property is located a short distance from the green spaces at Victoria Park and is close by multiple transport links including Whitechapel Tube station (Elizabeth Line, Hammersmith & City). The local area offers an array of amenities such as the Genesis Cinema, Sainsbury's, Anchor Retail Park, as well as cafes, restaurants and local pubs.

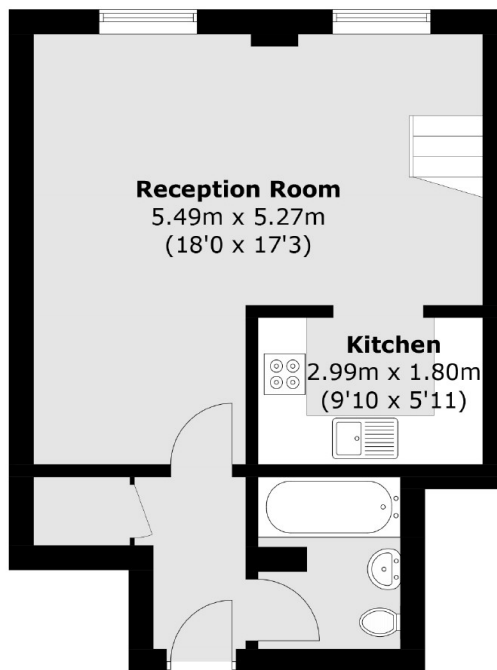
Features

- Share of Freehold
- One Bedroom
- Double Height Ceilings
- Communal Roof Terrace
- Mezzanine Level
- Victorian School Conversion

Durward Street, London, E1



Mezzanine



Fourth Floor

Total area (approx.): 54.7 sq. m (588.8 sq. ft)
(Including Mezzanine & Excluding Void)