



Purcell Street, N1

£3,300 Per calendar month

A split level three double bedroom apartment in Hoxton . This property is spacious and light with really decent sized rooms, separate kitchen and living area with a private balcony.

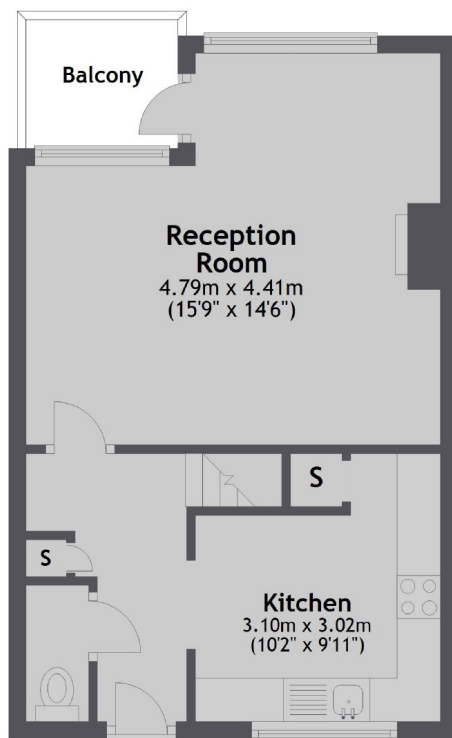
The apartment is located in the heart of Hoxton and is just a short walk to the vibrant Old Street and Shoreditch area's which have numerous trendy bars, cafes and restaurants.

Features

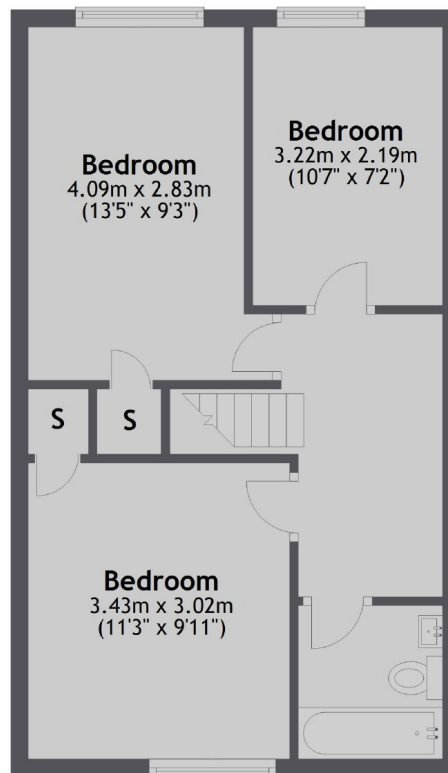
- Split Level
- Balcony
- Double Bedrooms
- Great Location
- Great Transport Links
- Hardwood Floor

Purcell Street, London, N1

Third Floor



Fourth Floor



Main area: Approx. 79.0 sq. metres (850.0 sq. feet)
Plus balconies, approx. 3.0 sq. metres (32.1 sq. feet)