



Poole Street, N1
£1,000,000

Dexters



Poole Street, N1

An exceptional opportunity to acquire one of the largest apartments in the award-winning Gainsborough Studios. Offering almost 1,500 sq.ft. of waterside living space, the raised ground floor consists of a huge, light-filled, lateral reception room with uninterrupted views over the peaceful Regent's Canal. The whole flat has been refurbished to a high specification, including the separate modern kitchen fitted with high end appliances. In addition to the ample space for dining and entertaining, there are two large bedrooms (master with en-suite), both with generous fitted storage.

Ideally located just over half a mile from Old Street Underground (Northern line and National Rail) and Hoxton Station (Overground), the Elizabeth Line is within a ten minute bus ride. The property is walking distance to the many wine bars, gastropubs, and cafés on Upper Street and Shoreditch.

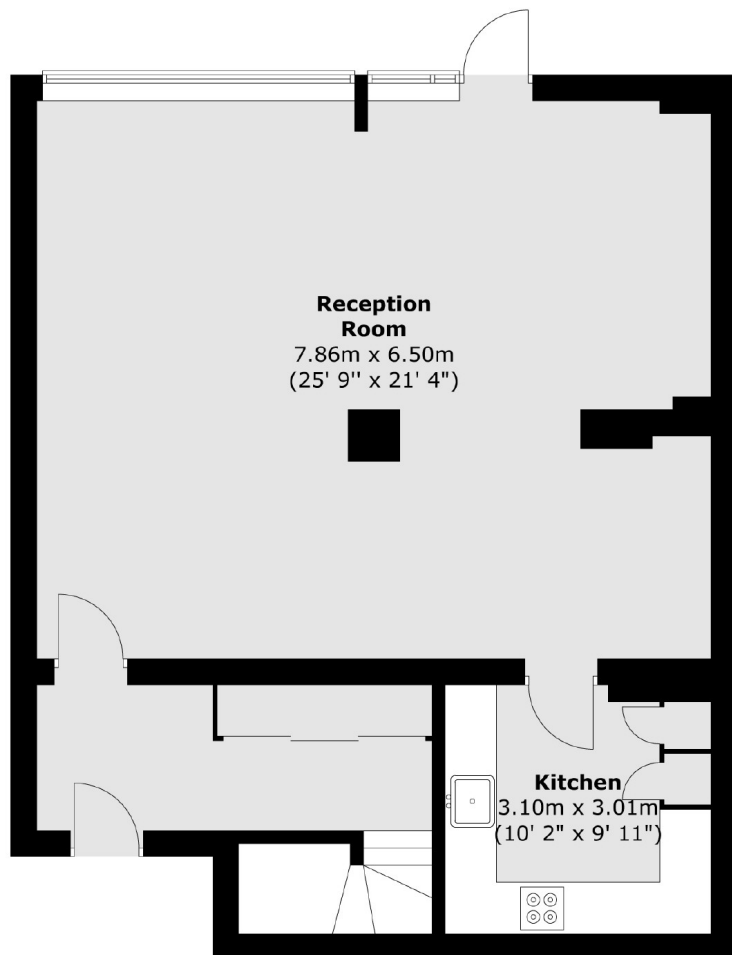
Features

- Two Double Bedrooms
- Canal View
- Dual Aspect
- En Suite
- Chain Free
- 1,443 sq.ft

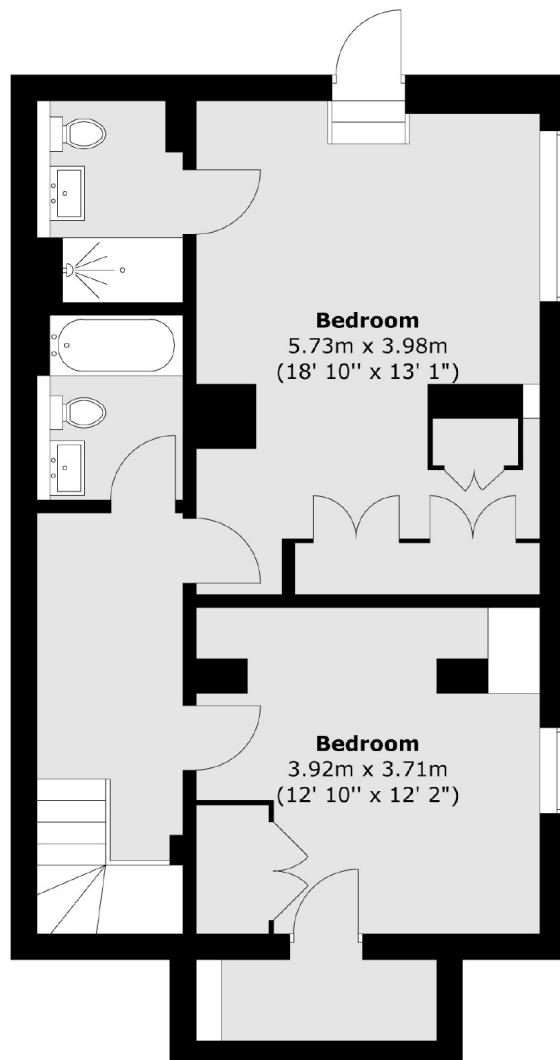


Poole Street, London, N1

Raised Ground Floor



Lower Ground Floor



Total area (approx.) : 134.1 sq. m (1443 sq. ft)