



Bartholomew Close, EC1A

£880,000

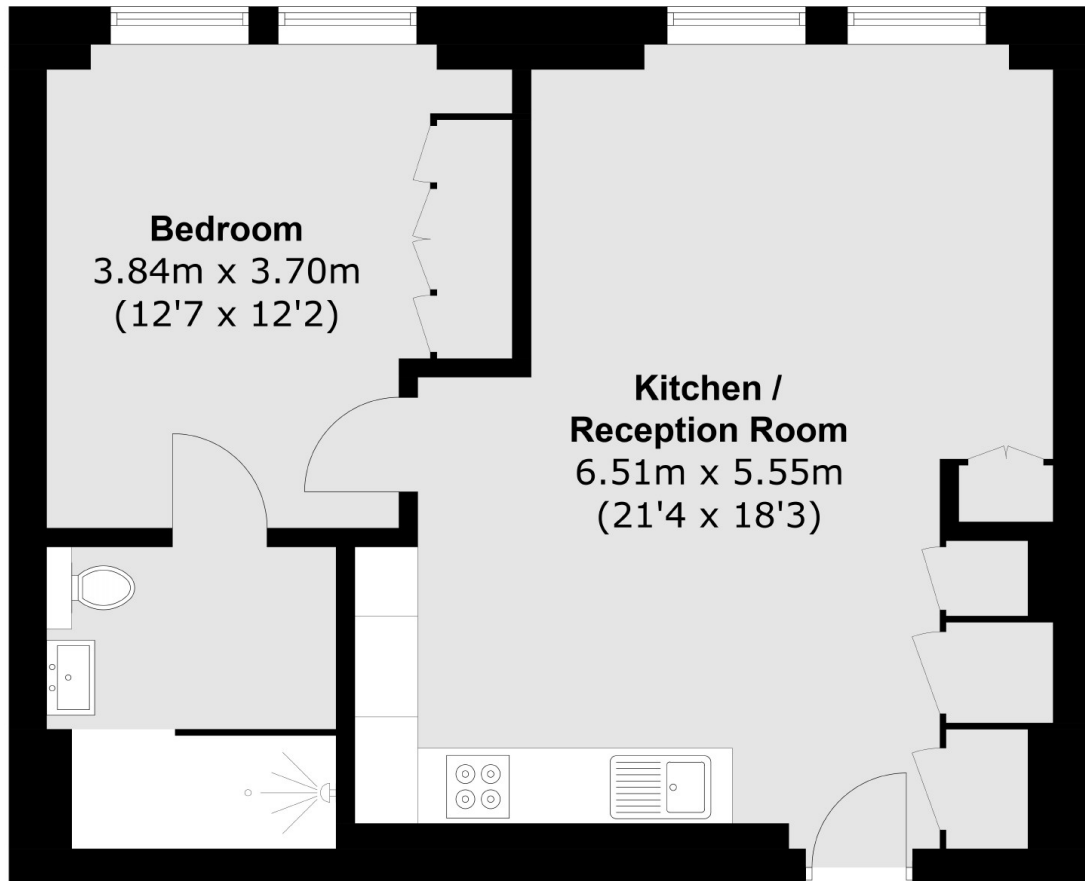
A bright, modern one double bedroom apartments located on the third floor of Bart's Square development. This property provides an open plan reception/kitchen with built in Miele appliances, a generous double bedroom with floor to ceiling windows and ample built in storage, and an en-suite bathroom. The apartment is finished to a high standard throughout and the development provides 24 hour concierge, a residents lounge and a cinema room.

This quiet location is just a short distance from a number of cafés, bars and shopping spots. The development is also ideal for easy access throughout the City via Barbican (Circle, Hammersmith&City,

Features

- One Double Bedroom
- Third Floor
- Lift Access
- 24 Hour Concierge
- Resident Bar and Lounge
- Cinema Room

Bartholomew Close, London, EC1A



Total area (approx.): 51.3 sq. m (552.2 sq. ft)

Dexters

Shoreditch
44 Great Eastern Street
London
EC2A 3EP
Sales
0207 483 6371

Energy Rating: B. We aim to make our particulars both accurate and reliable. However they are not guaranteed; nor do they form part of an offer or contract. If you require clarification on any points then please contact us, especially if you're traveling some distance to view. Please note that appliances and heating systems have not been tested and therefore no warranties can be given as to their good working order.

 **RICS** | Regulated
Estate Agent
and Letting Agent

dexters.co.uk