



Rectory Square, E1

£650,000

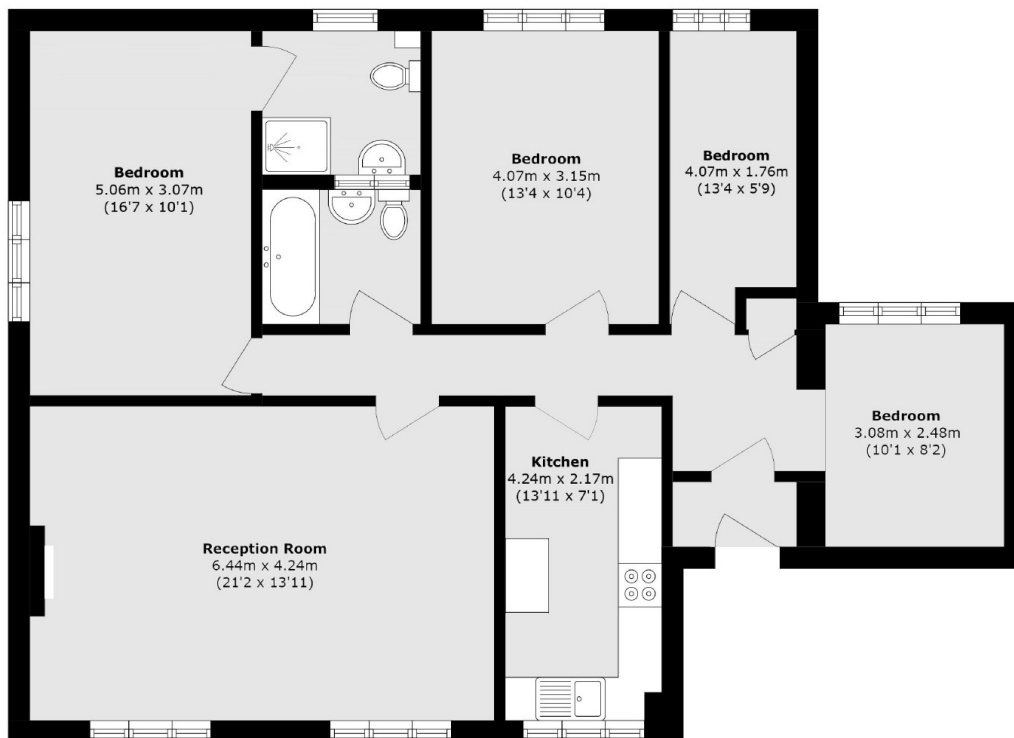
A four bedroom, share of freehold apartment located on the second floor of a secure, attractive period conversion. The properties significant size boasts a large living room with space to dine and a separate fully integrated kitchen with shaker style units. The property has four double bedrooms, of which the principle room is en-suite. Part of the former East London Synagogue this Victorian building is located on a private, quiet street with no through road. All residents have access to the quaint communal garden which also has ample cycle storage and access directly to Stepney Green to the rear.

Within short walking distance to Stepney Green (District, Circle, Hammersmith and City Lines) and Whitechapel (Elizabeth Line) underground stations providing convenient travel to all corners of the City and beyond. The property also benefits from wide range of restaurants, bars, boutique cafés and further amenities found in Canary Wharf, Shoreditch and The City

Features

- Secure, Private Development
- Large Reception
- Four Double Bedrooms
- Two Bathrooms
- Victorian Conversion
- Communal Garden
- Quiet Area

Rectory Square, London, E1



Total area (approx.): 106.0 sq. m (1140.9 sq. ft)