



## Patriot Square, E2

£3,500 Per calendar month

A three bedroom split level apartment with a private balcony. The property has a large separate kitchen, reception room that leads onto a private balcony, three bedrooms and a separate bathroom. The property is available part furnished.

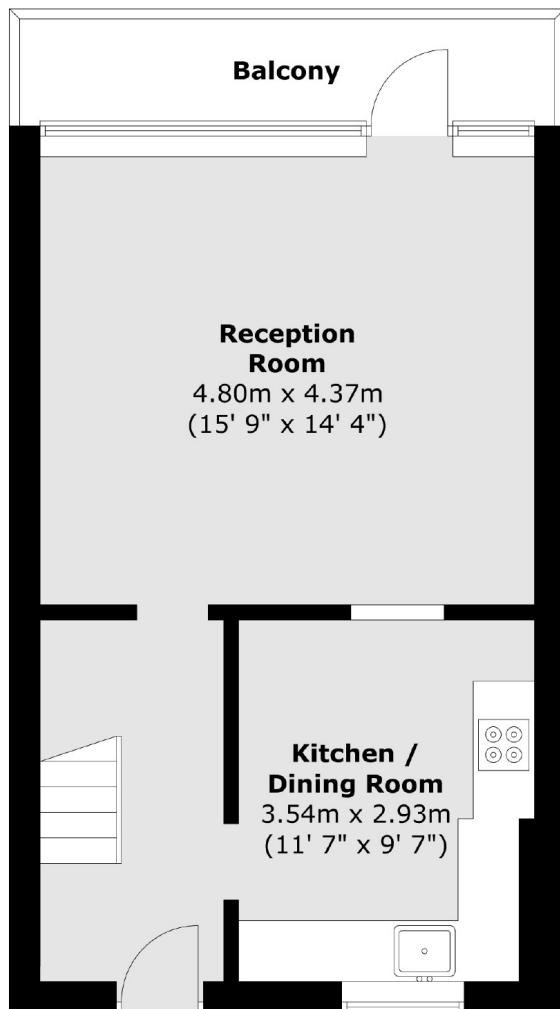
The apartment is located a short distance to Bethnal Green station and Cambridge Heath Overground as well as all the local shops, bars and cafes of Bethnal Green.

### Features

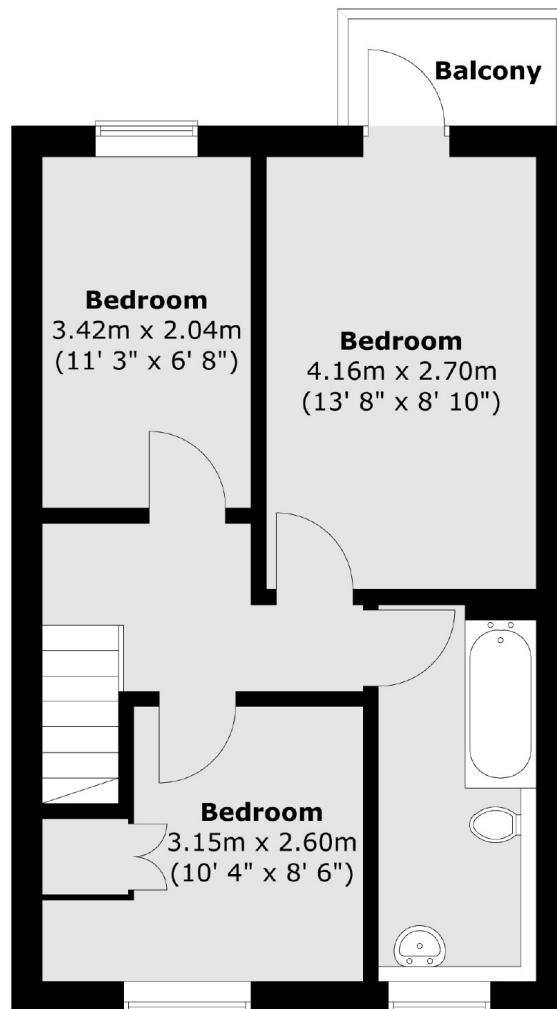
- Three Bedrooms
- Private Balcony
- Modern
- Storage
- Furnished
- Split Level

# Patriot Square, London, E2

**Second Floor**



**Third Floor**



Total area (approx.) : 79.1 sq. m (851 sq. ft)  
Total balcony area (approx.) : 7.7 sq. m (82 sq. ft)