

Poole Street, N1

£2,500 Per calendar month

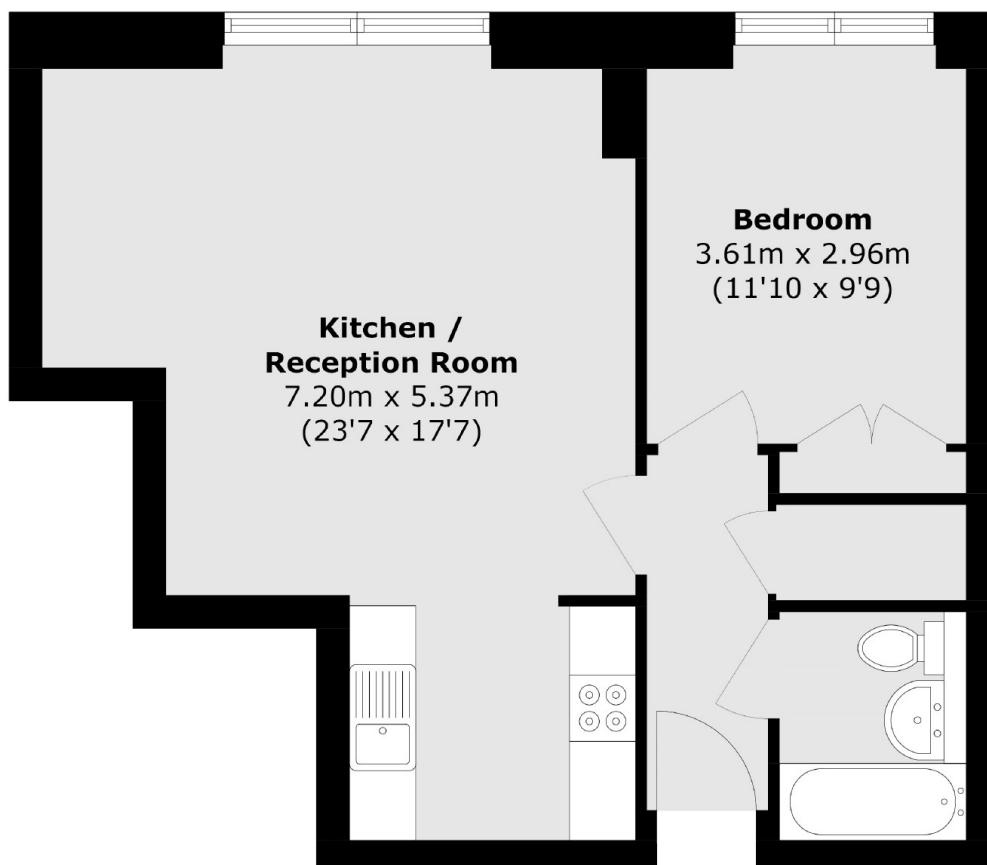
A one bedroom apartment set in a canal side development. This property has an open plan reception room with wood floors and ample storage, well proportioned double bedroom and main bathroom.

Gainsborough Studios is within easy reach of Angel and Old Street tube stations. There is a great range of bars, shops and restaurants on Upper Street, Hoxton Square and Shoreditch are all within close proximity.

Features

- Double Bedroom
- Raised Ground Floor
- One Bathroom
- Open Plan
- Gated Development
- Concierge

Poole Street, London, N1



Total area (approx.): 51.3 sq. m (552.1 sq. ft)