



Commercial Street, E1  
£850,000

**Dexters**



## Commercial Street, E1

Part of the sought-after Cityscape development, this three bedroom apartment offers a large living space, with an eastern aspect, providing plenty of natural light. The property features a stylish open-plan living and dining area with a fully fitted kitchen, and space to dine, two generous double bedrooms with built-in wardrobes, one of which is en-suite and single bedroom that can also double up as a study. The property also has a separate family bathroom, and a private balcony, where you can enjoy views over the communal gardens, air conditioning and a secure underground parking space.

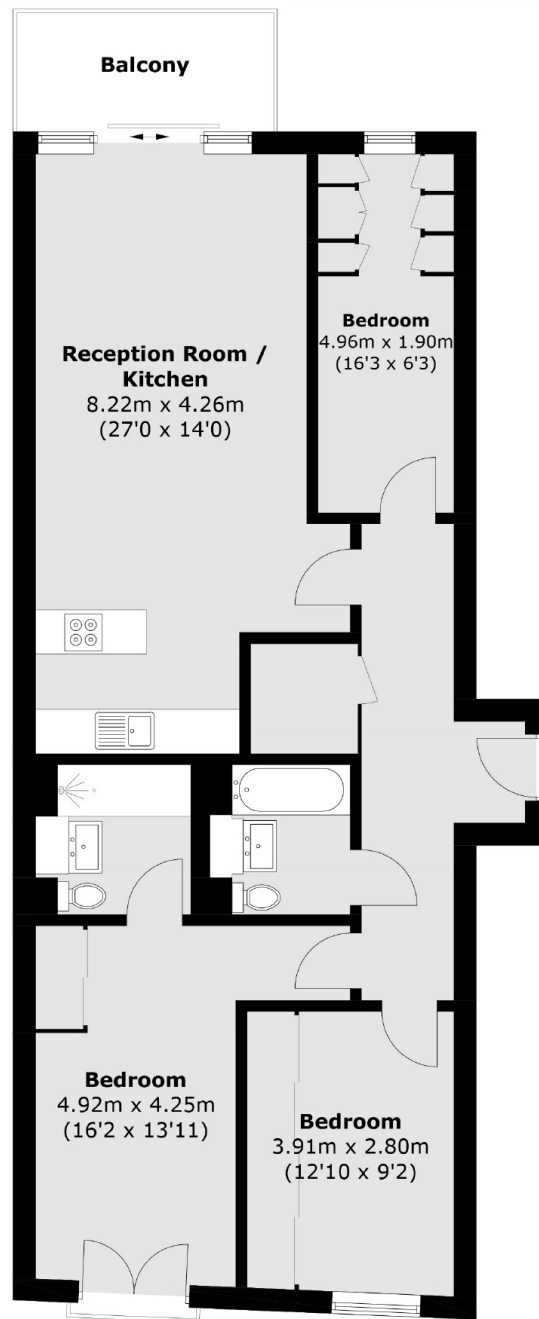
Located in the central Aldgate area, the property is very close to Aldgate East Station (District and Hammersmith & City Line) Aldgate station (Circle and Metropolitan Line). Residents enjoy the added benefits of 24-hour concierge service, access to an on-site gym, and a roof terrace with 360 degree views across London. Additionally, the apartment is chain-free.

### Features

- Three Bedrooms
- Two Bathrooms
- Modern Development
- Central Location
- On-site Residents Gym
- Private Balcony



# Commercial Street, London, E1



Total area (approx.): 88.8 sq. m (955.8 sq. ft)  
Balcony: 5.6 sq. m (60.3 sq. ft)

## Dexters

Shoreditch  
44 Great Eastern Street  
London  
EC2A 3EP  
Sales  
0207 483 6371

Energy Rating: B. We aim to make our particulars both accurate and reliable. However they are not guaranteed; nor do they form part of an offer or contract. If you require clarification on any points then please contact us, especially if you're traveling some distance to view. Please note that appliances and heating systems have not been tested and therefore no warranties can be given as to their good working order.

 **RICS** | Regulated  
Estate Agent  
and Letting Agent

[dexters.co.uk](https://www.dexters.co.uk)