



Great Sutton Street, EC1V
£800,000

Dexters



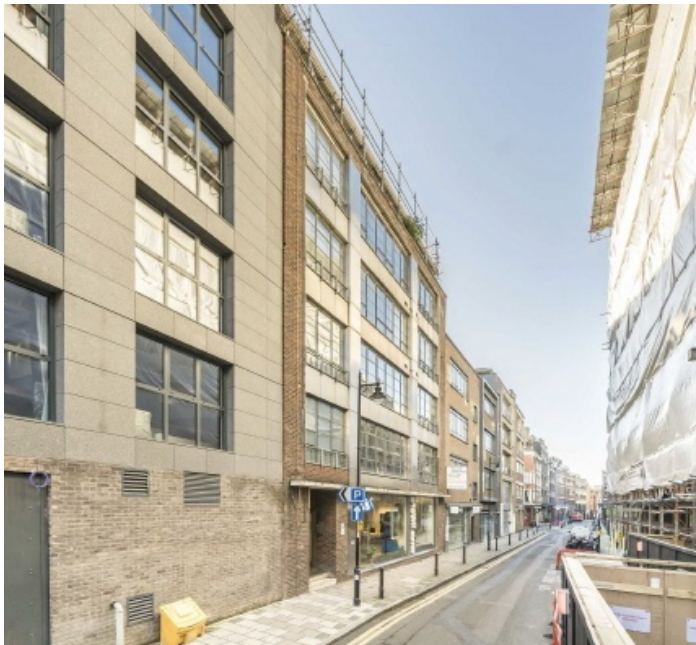
Great Sutton Street, EC1V

This modern, two double bedroom, two bathroom property features a spacious, semi-open plan kitchen/reception with access to two private balconies and floor to ceiling windows. Both generous double bedrooms, one with en suite, offer plenty of storage space and direct access to the larger balcony.

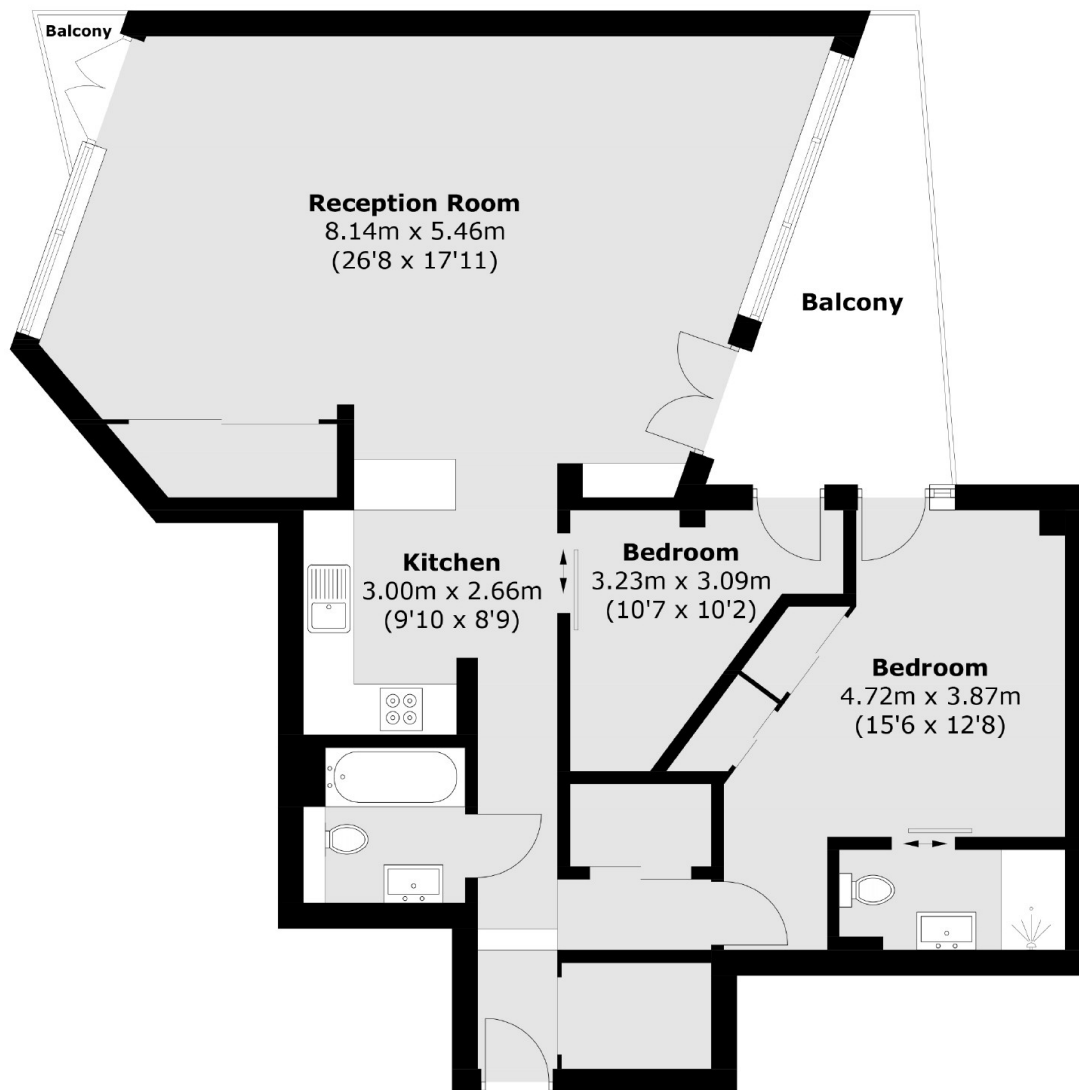
Located in the Farringdon/Barbican area, the local area offers a selection of cafés, bars, restaurants and shopping opportunities. Ideally located less than five minutes from Farringdon (Elizabeth Line), Barbican (Metropolitan, Circle, Hammersmith&City), and Liverpool Street (Overground), providing easy access into the City.

Features

- Two Double Bedrooms
- Two Private Balconies
- Two Bathrooms
- Great Transport Links
- Modern Design
- Built In Storage



Great Sutton Street, London, EC1V



Total area (approx.): 93.5 sq. m (1,006.4 sq. ft)
Balcony area : 10.6 sq. m (114.1 sq. ft)