



Lovat Lane, EC3R  
£1,350,000

**Dexters**



## Lovat Lane, EC3R

A modern, split level two-bedroom, two-bathroom apartment. The upper floor is comprised of a large reception room, a master bedroom with an en-suite dressing room and bathroom and a second bedroom, also with an en-suite facilities. The fully fitted kitchen with dishwasher, large fridge/ freezer, separate wine fridge, utility room/ guest WC and a second large reception room are located on the lower floor. The property also benefits from having its own entrance.

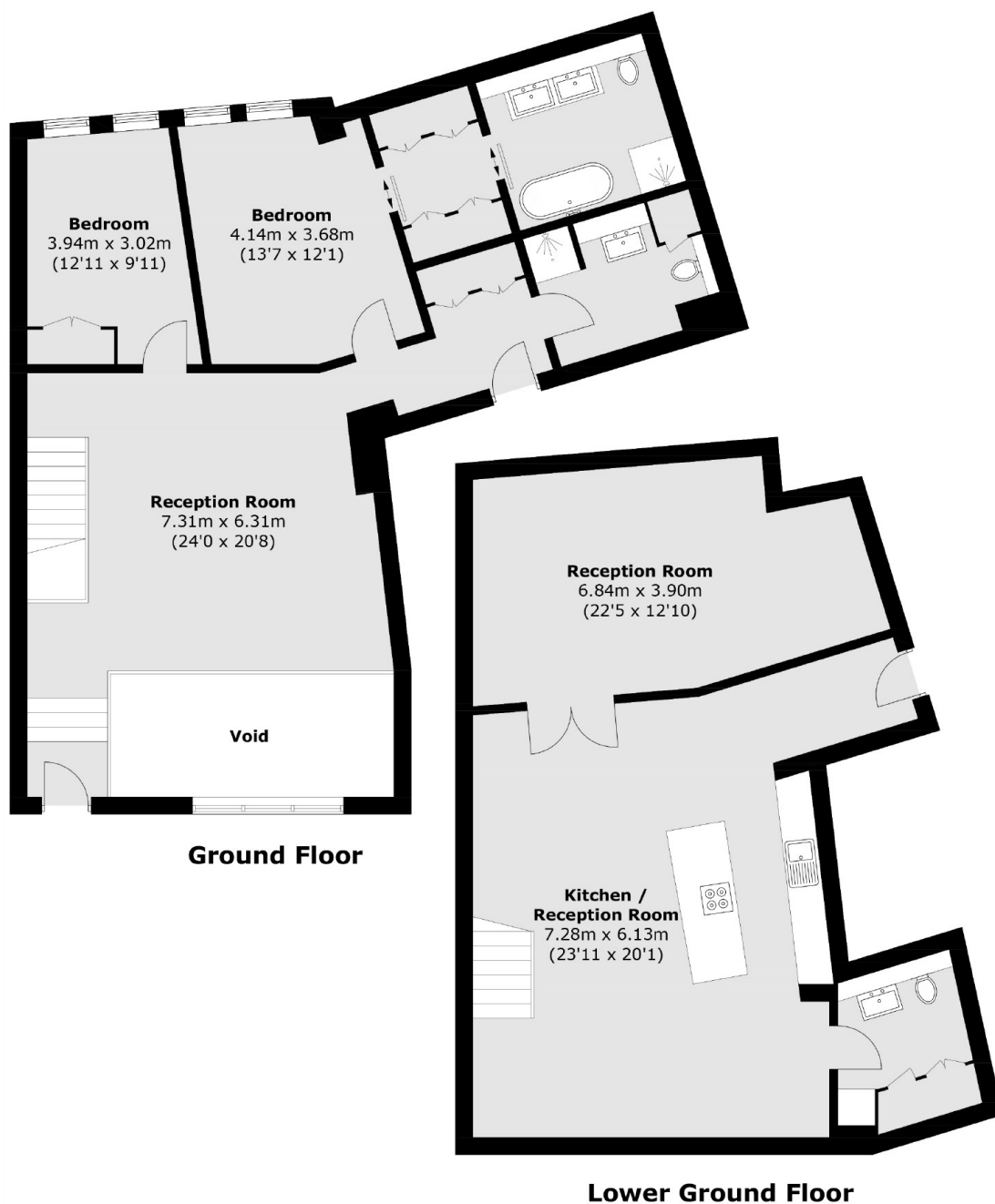
Lovat Lane located on a winding cobbled path in the City, boasts a great location in the heart of the financial district there are many popular bars and restaurants within easy walking distance. Transport links close by include Monument (0.1 miles), Cannon Street (0.3 miles), Fenchurch Street (0.4 miles), Tower Hill (0.4 miles) and Bank (0.4 miles). The iconic Tower of London is also a short distance away (0.5 miles).

### Features

- Two bedroom, Two Bathroom
- Wooden Floors
- Split Level
- Chain Free
- Modern Kitchen
- Quite Location



Lovat Lane,  
London, EC3R



Total area (approx.): 168.2 sq. m (1,810.5 sq. ft)  
(Excluding Void)

**Dexters**

Shoreditch  
44 Great Eastern Street  
London  
EC2A 3EP  
Sales  
0207 483 6371

Energy Rating: E. We aim to make our particulars both accurate and reliable. However they are not guaranteed; nor do they form part of an offer or contract. If you require clarification on any points then please contact us, especially if you're traveling some distance to view. Please note that appliances and heating systems have not been tested and therefore no warranties can be given as to their good working order.

 **RICS** | Regulated  
Estate Agent  
and Letting Agent

[dexters.co.uk](https://www.dexters.co.uk)