



Chilton Street, E2
£1,100,000

Dexters



Chilton Street, E2

Three Bedroom third floor duplex apartment benefiting from a private terrace and ample living space finished to a high standard throughout and set within a modern and gated development in the heart of Shoreditch. The property boasts a large open plan living room with space to dine and a fully integrated kitchen and island. The property has two spacious double rooms, one of which are en-suite and a single bedroom which would work well as a bedroom or study. Benefitting from a generous amount of natural light making use of the top floor position by way of skylight features.

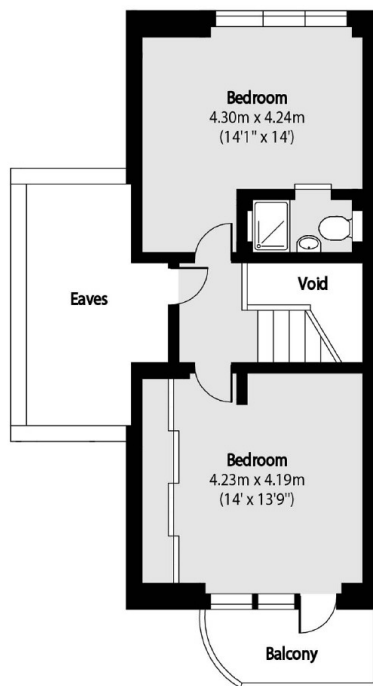
Chilton Street is ideally located close to a wealth of shops, bars and restaurants found in Shoreditch and the City. Transport links close to the property include Shoreditch High Street, Old Street and Liverpool Street Stations for easy commutes to all corners of the City and beyond.

Features

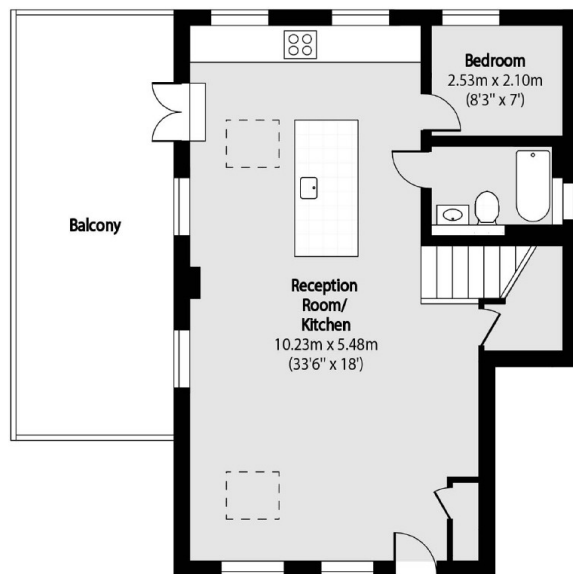
- Three Bedrooms
- Two Bathrooms
- Duplex Apartment
- Large Terrace
- Gated Development
- Secure Parking Space



Chilton Street, London, E2



Fourth Floor



Third Floor

Total area (approx): 106.52 sq m (1147 sq. ft)
(Excluding Eaves & Void)
Balcony total area (approx): 24.00 sq m (258 sq. ft)