



Bollinder Place, EC1V

£3,250,000

Dexters



Bollinder Place, EC1V

An expansive four bedroom, three bathroom penthouse in Valencia Tower, part of the iconic 250 City Road development by world-renowned architects Foster + Partners and Berkeley Homes. The entrance level offers panoramic views of London's skyline through floor-to-ceiling windows, two elegant reception rooms with ample space for entertaining, a fully integrated kitchen with Miele appliances with an additional breakfast space and stylish guest WC and a separate utility room. The upper level provides four bedrooms, two with en-suite, and an additional family bathroom, all newly renovated to an extremely high standard.

Residents of Valencia Tower benefit from an extensive range of premium amenities, including a 20-metre swimming pool, a state-of-the-art gym, and spa facilities. A dedicated 24-hour concierge service ensures seamless day-to-day living and the development is surrounded by 1.9 acres of landscaped gardens, designed by award-winning landscape architects, providing a peaceful retreat in the heart of the city.

Located in Zone 1, 250 City Road offers unrivalled access to all corners of London via Old Street, Angel, and Farringdon stations. The surrounding area boasts a selection of dining and shopping options, from the culinary spots of Exmouth Market to the boutiques of Upper Street. The Regent's Canal and host of green spaces are also close by.

Features

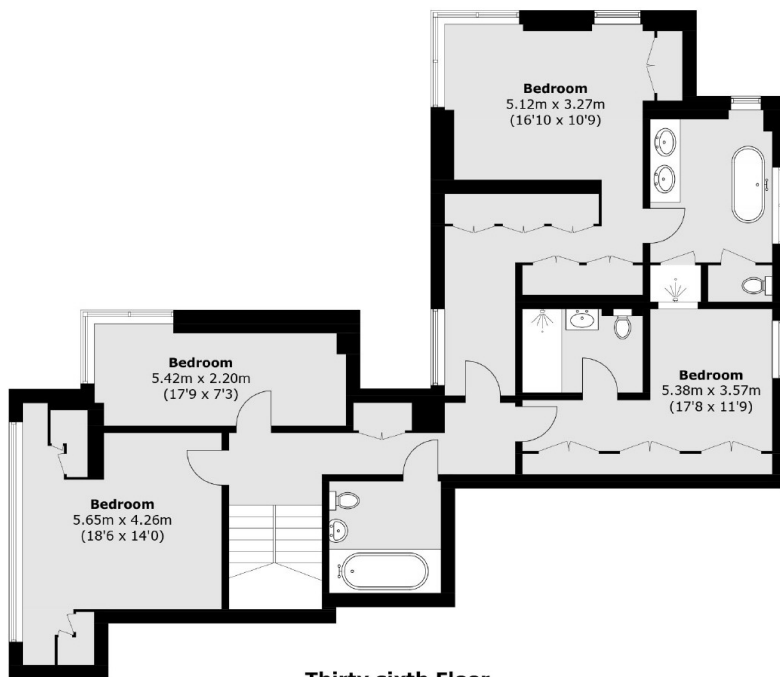
- Penthouse apartment
- Four Bedrooms
- Three Bathrooms
- Panoramic City Views
- 24hr Concierge
- Swimming Pool



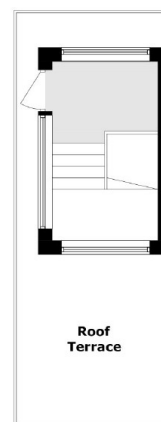




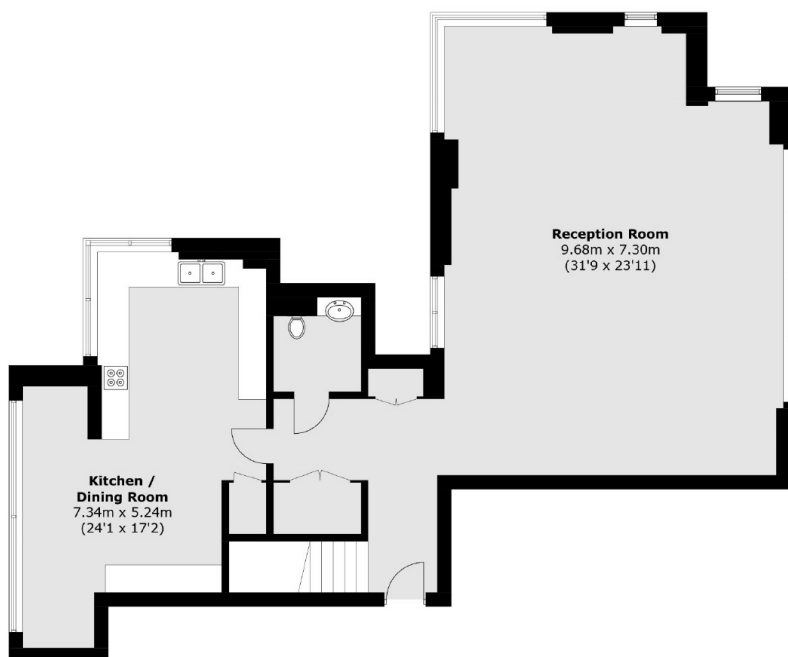
Bollinder Place, London, EC1V



Thirty sixth Floor



Thirty Seventh Floor



Thirty Fifth Floor

Total area (approx.): 248.6 sq. m (2,675.9 sq. ft)
Roof Terrace 16.6 sq. m (178.7 sq. ft)

Dexters

Shoreditch
44 Great Eastern Street
London
EC2A 3EP
Sales
0207 483 6371

Energy Rating: C. We aim to make our particulars both accurate and reliable. However they are not guaranteed; nor do they form part of an offer or contract. If you require clarification on any points then please contact us, especially if you're traveling some distance to view. Please note that appliances and heating systems have not been tested and therefore no warranties can be given as to their good working order.

 **RICS** | Regulated
Estate Agent
and Letting Agent

[dexters.co.uk](https://www.dexters.co.uk)